

280
B

SUN SHIPBUILDING CO.

MAIN OFFICE, CHESTER, PA.



1920
1872
73

ROBT. WETHERILL & CO.

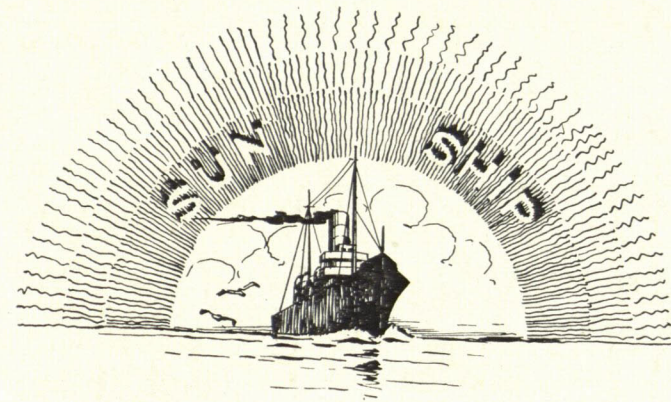
ESTABLISHED 1872

INCORPORATED

INCORPORATED 1905

28⁰⁰
B

SUN SHIPBUILDING COMPANY



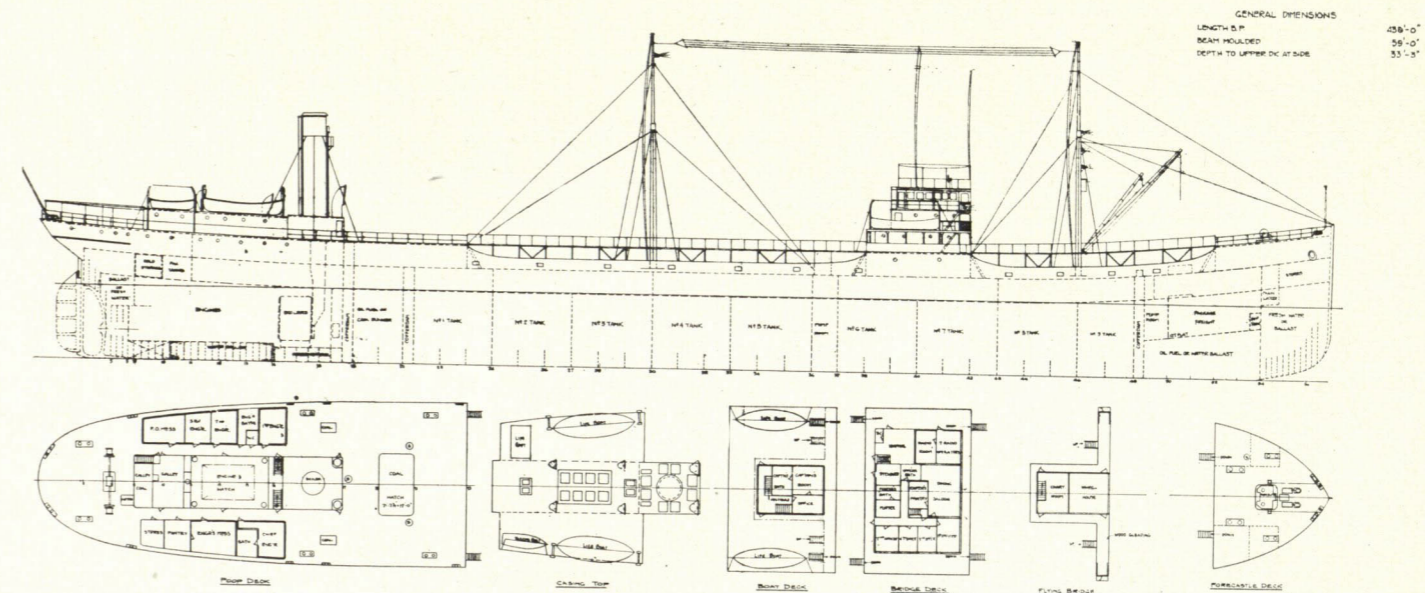
BUILDERS OF
ALL TYPES OF STEEL VESSELS
MARINE BOILERS BOILER FRONTS
UPTAKES AND STACKS
TANKS AND MOUNTINGS

THE plant of the Sun Shipbuilding Company is located on the Delaware River, at Chester, Pa. This plant is designed for the manufacture of complete vessels, and certain standard types shown on the following pages have been adopted. It is the desire of this Company to confine themselves to a few designs and to have these designs represent the sturdiest and most efficient ships of their type which can be built.

The property on which this plant is located consists of eighty acres of land lying in the heart of Chester, with 2000 feet of deep-water frontage on the Delaware River. The property is high and dry, served by the Philadelphia & Reading, the Pennsylvania and the Baltimore & Ohio Railroads, and in a community where labor and material are abundant.

Fabricating shops are represented by capacious steel buildings in shape of the letter "H," having the over-all dimensions of 540 feet by 600 feet, and material is brought in from the manufacturers, unloaded, and fabricated and, as far as possible, assembled before going onto the ways.

Shipways are designed entirely of steel and concrete, constructed in an absolutely permanent manner, and capable of building ships up to 600 feet in length. Crane service is provided with two overhead cranes, having a span of 125 feet, with railroad tracks on both sides providing additional facilities.



10,500-Ton Tank Steamer

Bulk Oil Steamer of 10,500 tons deadweight.
 Length B. P. 430' 0" x Beam 59' 0" x Depth 33' 3"
 to upper deck.
 Deadweight carrying capacity, 10,500 tons.
 Gross tonnage (approximately), 6700.
 Draft to B. o' T. summer freeboard, 25' 7 $\frac{3}{8}$ ".
 Speed, 10 $\frac{1}{2}$ knots in service.
 Three steam winches, steam windlass and steam steering gear.
 Two steel masts, 2 five-ton cargo booms.

Equipment, fittings and accommodations of good, substantial quality.

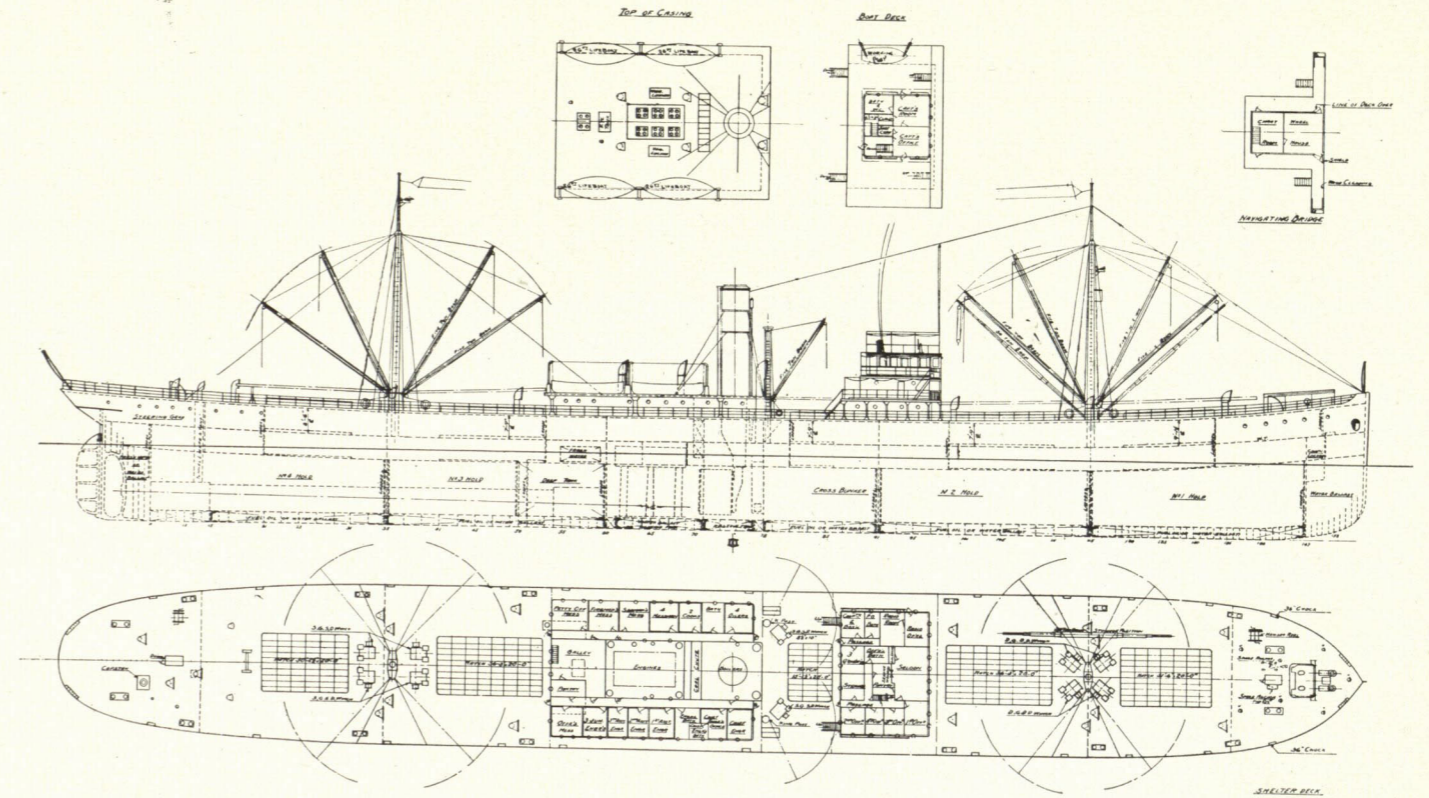
Propelling machinery :—

Engines, $\frac{27, 45\frac{1}{2}, 76}{51}$.

Boilers, 15' 3" diameter x 11' 5" long. 190 pounds pressure.

Three 45" furnaces. Heated forced draft. Oil or coal-burning.

Vessel to class \boxtimes 100 A. 1. Lloyds or American Bureau.



11,590-Ton Shelter Deck Freight Steamer

Shelter Deck Freight Steamer of 11,590 tons deadweight. (Closed-in shelter deck.)

Length B. P. 435' 0" x Beam 57' 6" x Depth 38' 0" to shelter deck.

Three complete decks, with 7' 9" height of tween-decks.

Deadweight carrying capacity, 11,590 tons.

Gross tonnage, 7700.

Draft to B. o' T. summer freeboard, 28' 1 1/2".

Speed, 10 1/2 knots per hour in service.

Ten steam cargo winches.

Steam windlass and steam steering gear.

Two steel masts, 2 king posts, 1 thirty and 10 five-ton cargo booms.

Equipment, fittings and accommodations of good, substantial quality.

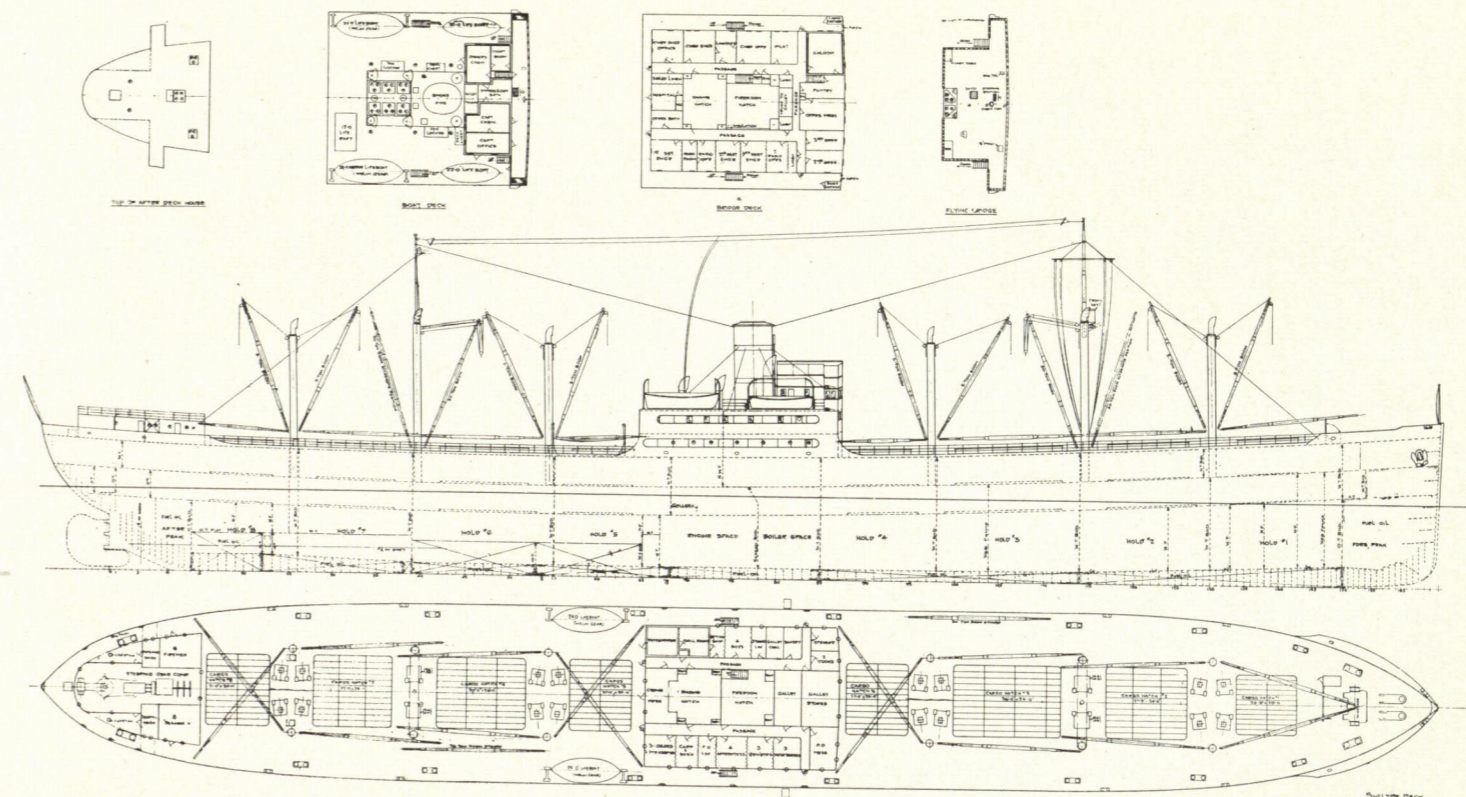
Propelling machinery:—

Engines, $\frac{27,45\frac{1}{2}, 76}{51}$.

Boilers, 15' 10" diameter x 11' 11 1/4" long. 190 pounds pressure.

Three 48" furnaces. Heated forced draft. Coal or oil-burning.

Vessel to class \boxtimes 100 A. 1. Lloyds. Shelter deck, with free board or American Bureau.



12,100-Ton Shelter Deck Twin Screw Freight Steamer

Shelter Deck Freight Steamer of 12,100 tons deadweight.

Length, B. P., 449' 0½".

Beam, Mld., 60' 0".

Depth, Mld., 40' 11".

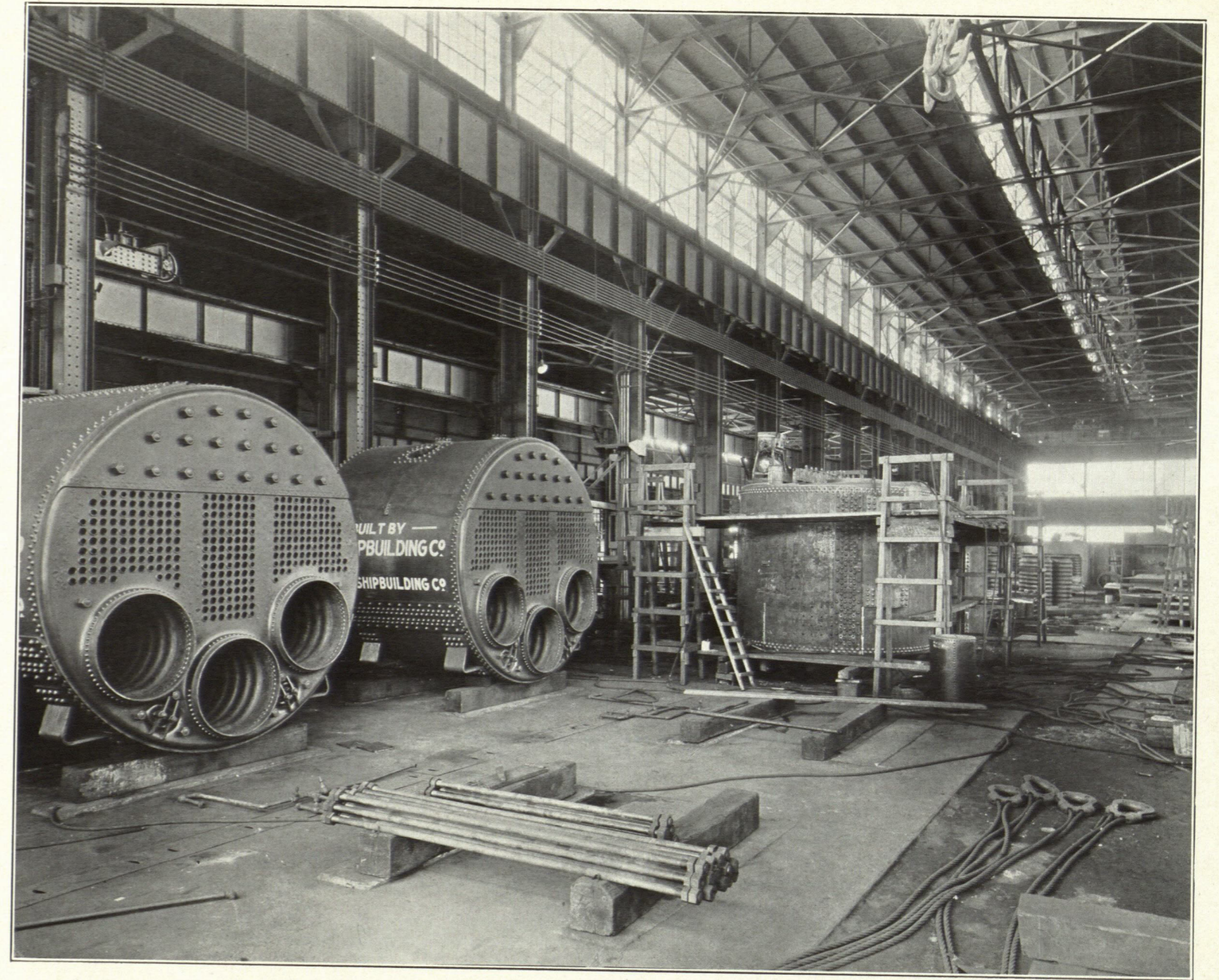
Three complete decks, with 9' 7½" height of tween-decks.

Deadweight carrying capacity about 12,100 tons.

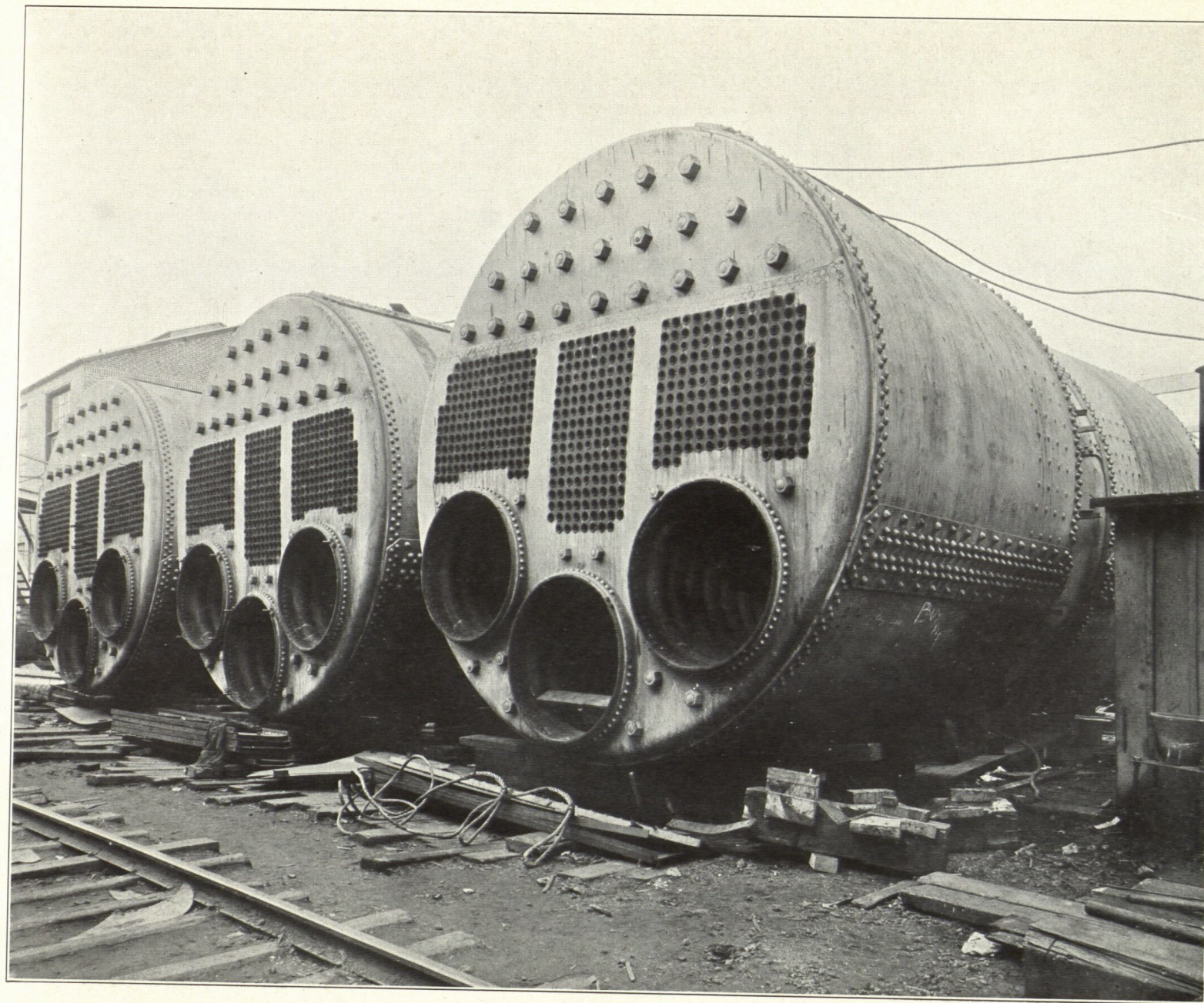
Gross tonnage, 8,738 tons.

Draft to B. o' T. summer freeboard, 31' 0".

Speed, 14 knots per hour in service.



ERECTING END OF BOILER SHOP
SUN SHIPBUILDING COMPANY



BOILERS READY FOR INSTALLATION
BUILT BY SUN SHIPBUILDING COMPANY

ROBT. WETHERILL & CO.

INCORPORATED

DIVISION OF THE SUN SHIPBUILDING COMPANY

Manufacturers of

Marine Engines, Corliss Engines,
Marine Auxiliaries,
Power Machinery



CHESTER · PENNSYLVANIA
U · S · A

INTRODUCTORY

WE submit catalog of photographs, from the fact that the camera illustrates more clearly and forcibly than written matter our Engines, Machine Construction and Designs, and the Erecting Departments, showing the capacity of our Works. The photographs contained herein have not been retouched, having been purposely left in this condition to show actual work.

WETHERILL CORLISS ENGINES

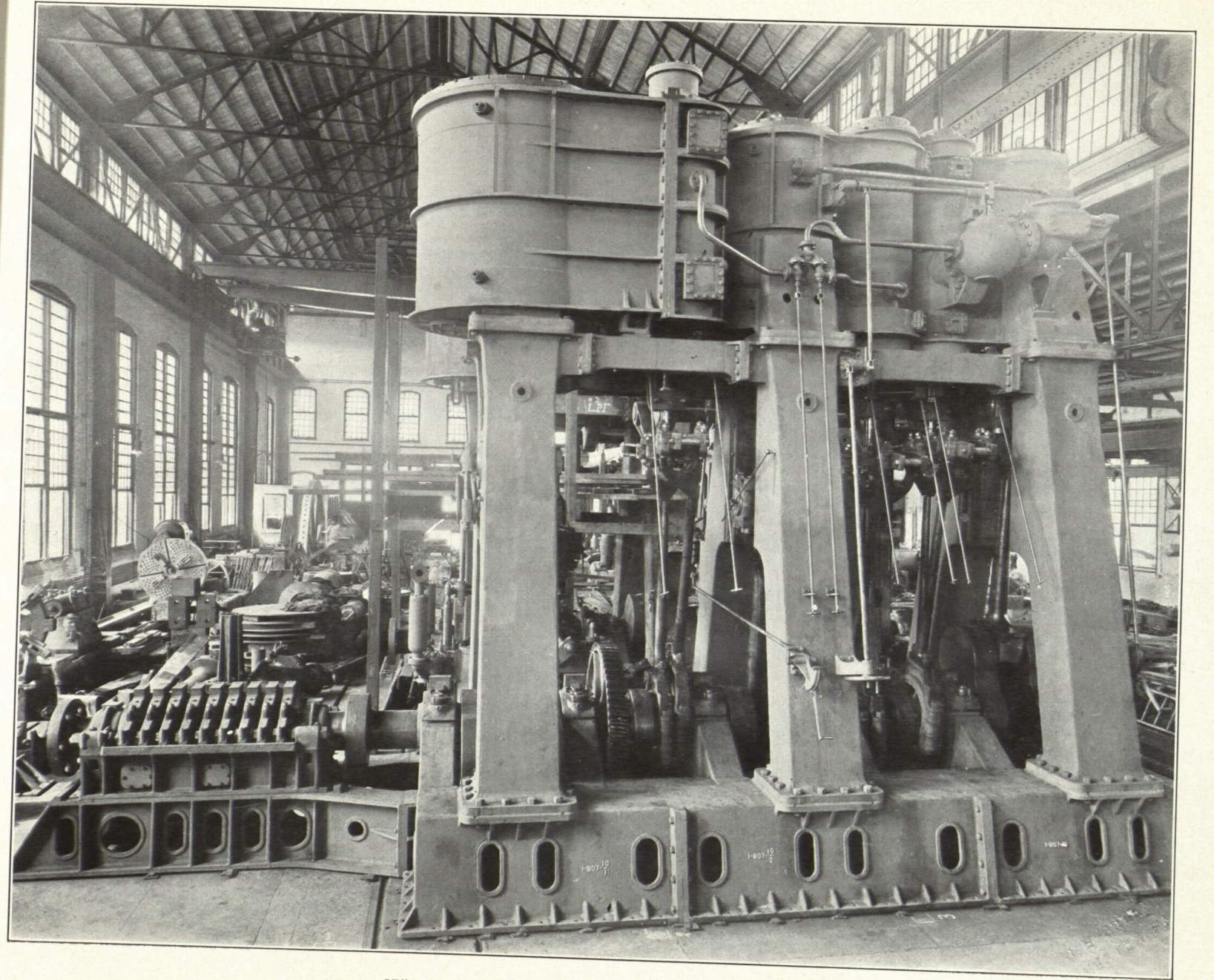
These include Heavy Duty and Girder Type Corliss Engines, Single Cylinder and Compound, adapted to the exacting requirements of alternating and direct-current work for any service—Rolling Mills, Pumping Engines, Air Compressors or any installation where reliable power is required.

Our Gravity Type Valve Gear (patented) is designed for high rotative speeds, applicable to office building installation; smooth and noiseless in operation. All valve gear details with accurate wedge adjustment; no driven keys used in the construction.

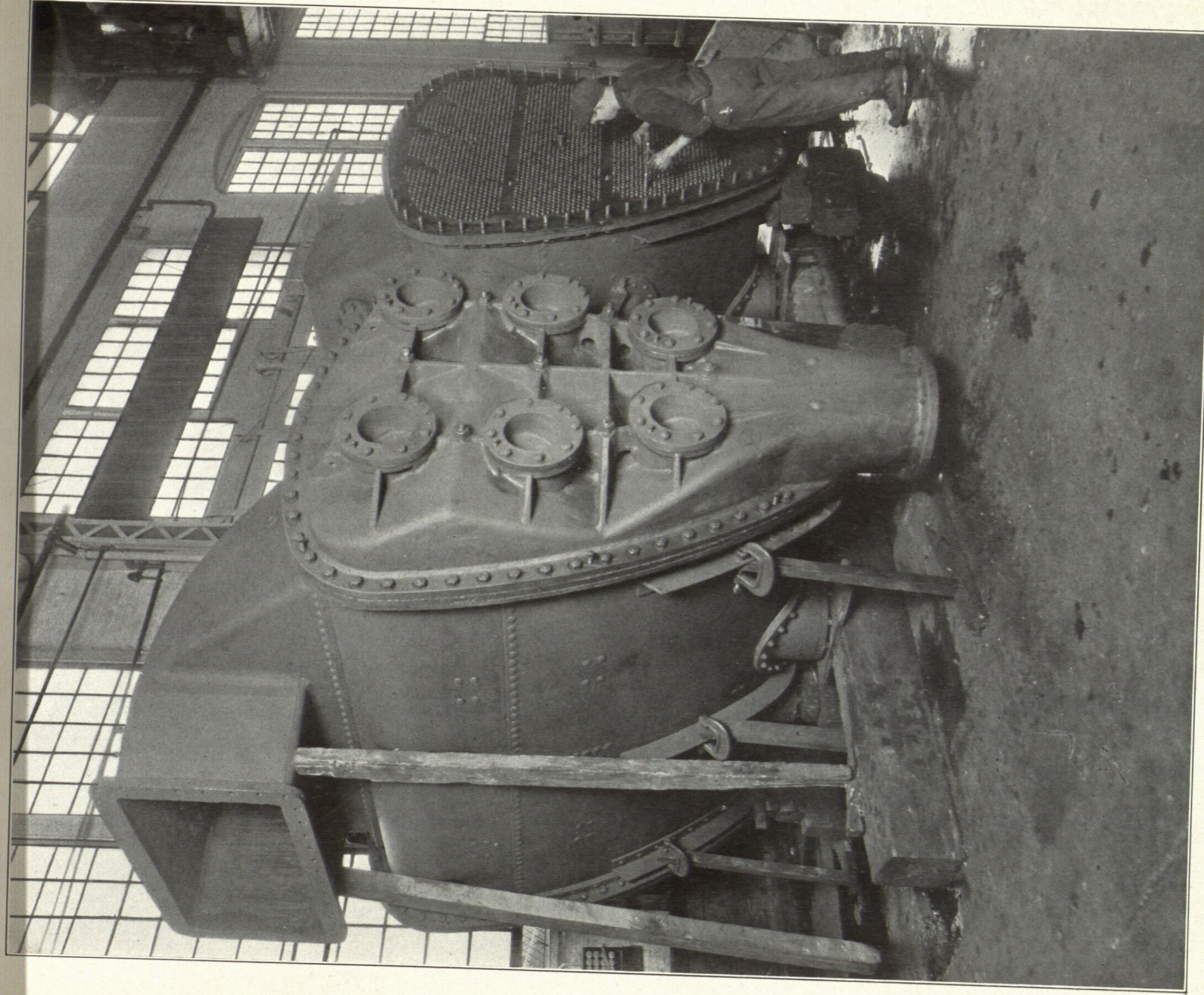
Corliss Engines built any size and capacity, from 50 H. P. to 3000 H. P.

FOUNDRY DEPARTMENT

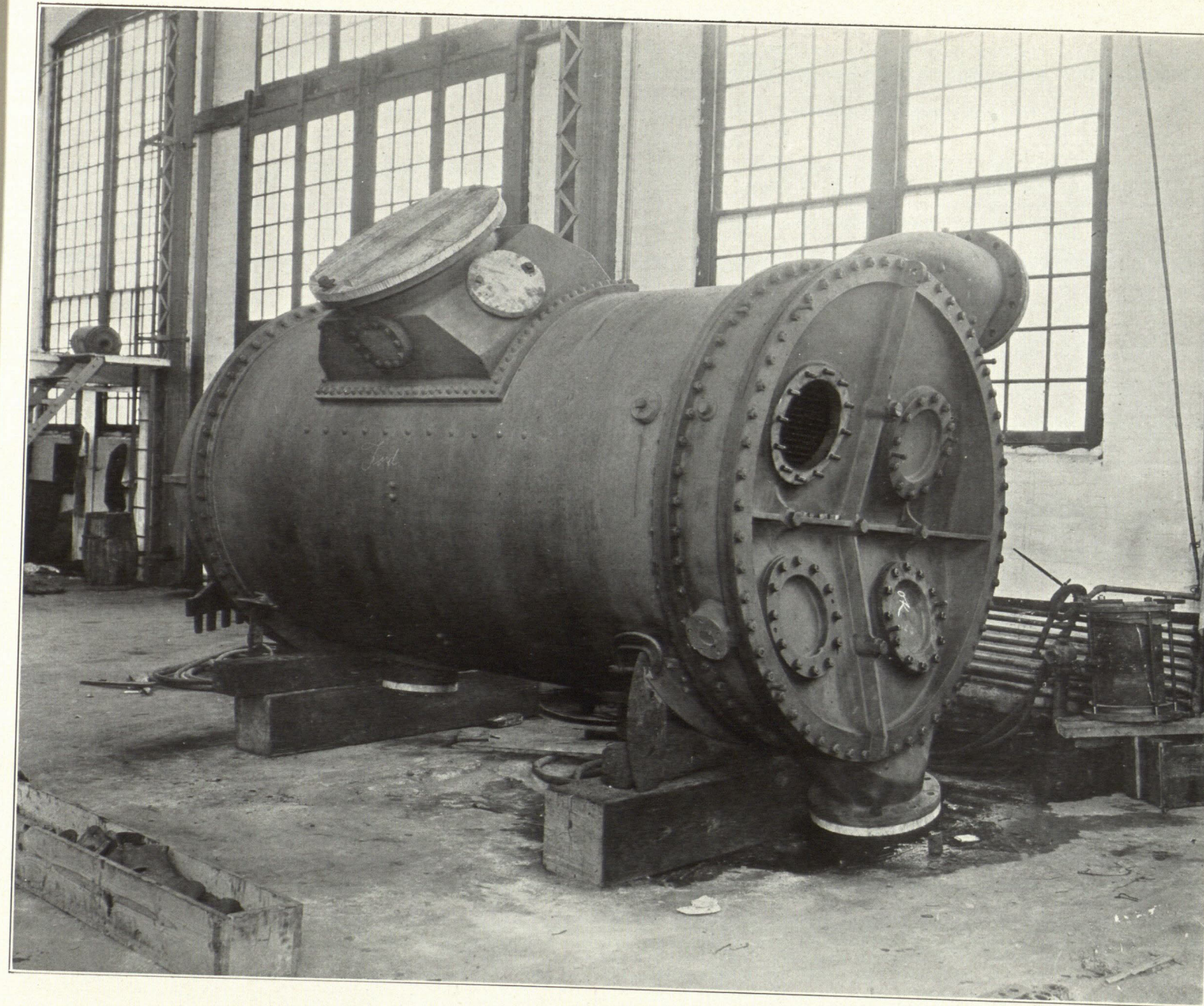
The Foundry is equipped with Traveling Cranes, two Cupolas, and appliances for Loam and Dry Sand work. Grey Iron Castings—weight up to 70,000 pounds.



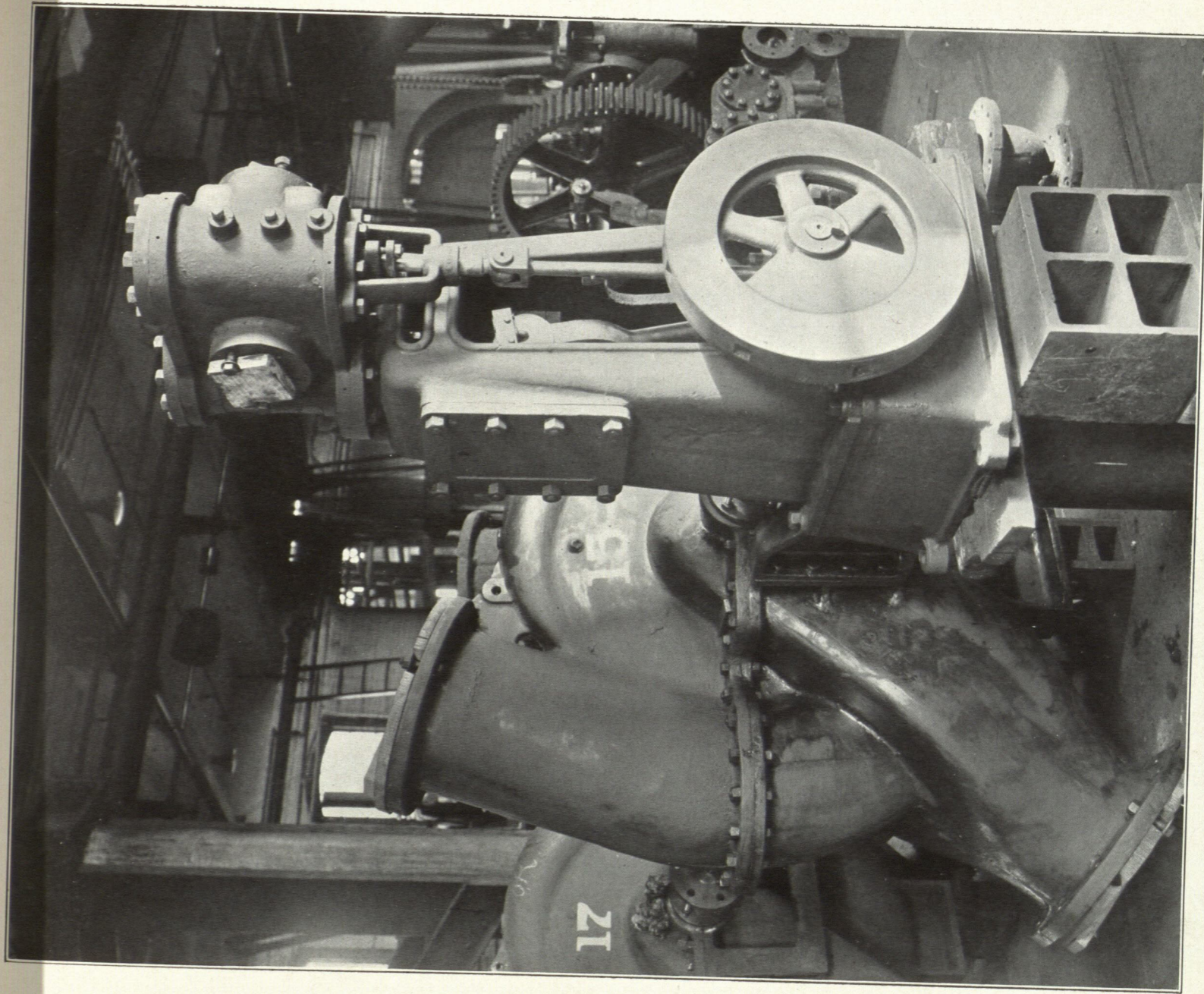
27" x 45½" x 76" x 51" STROKE MARINE ENGINE
BUILT BY ROBT. WETHERILL & CO., INC.



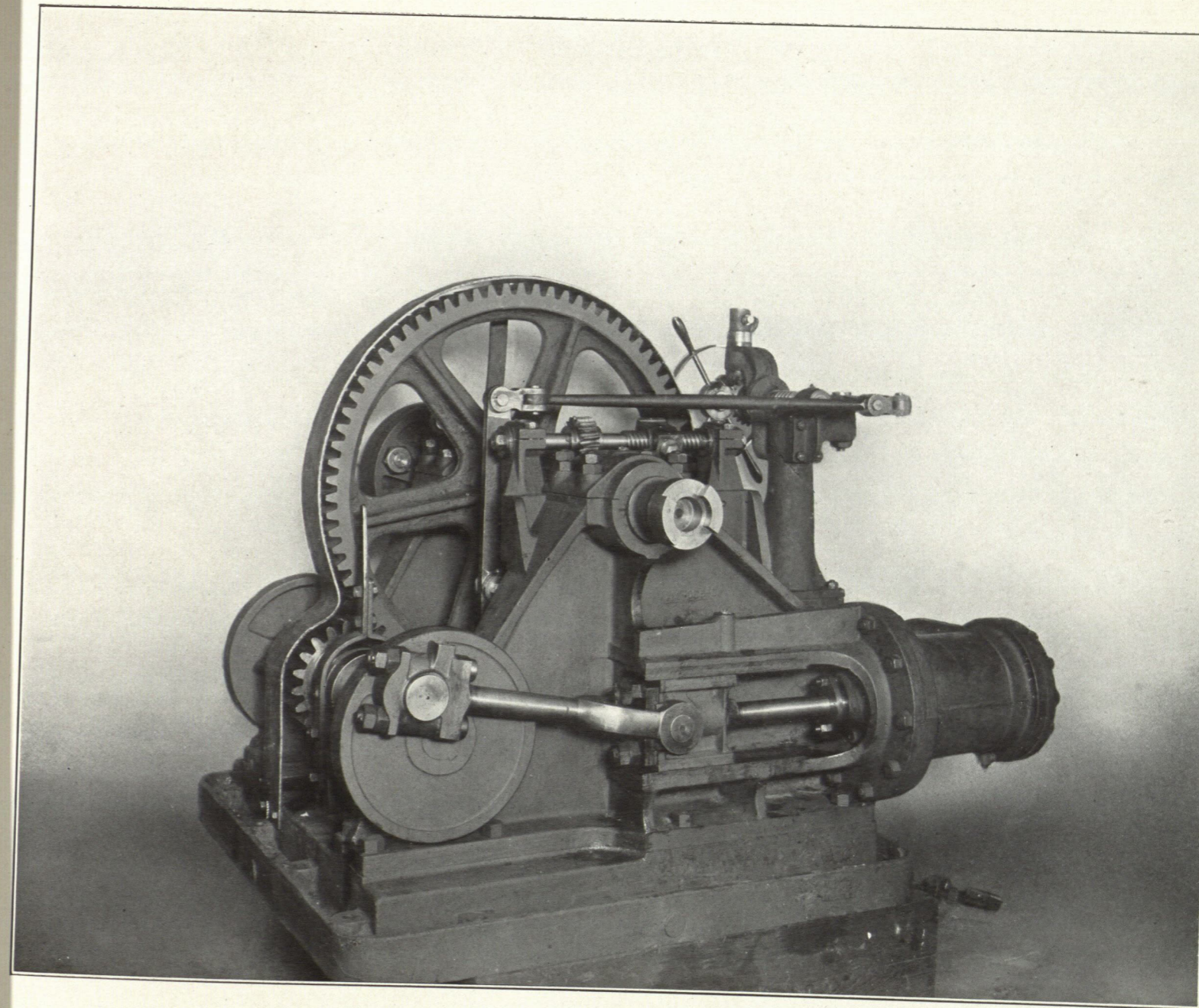
THREE-PASS CONDENSER, PEAR SHAPE TYPE
BUILT BY ROBT. WETHERILL & CO., INC.



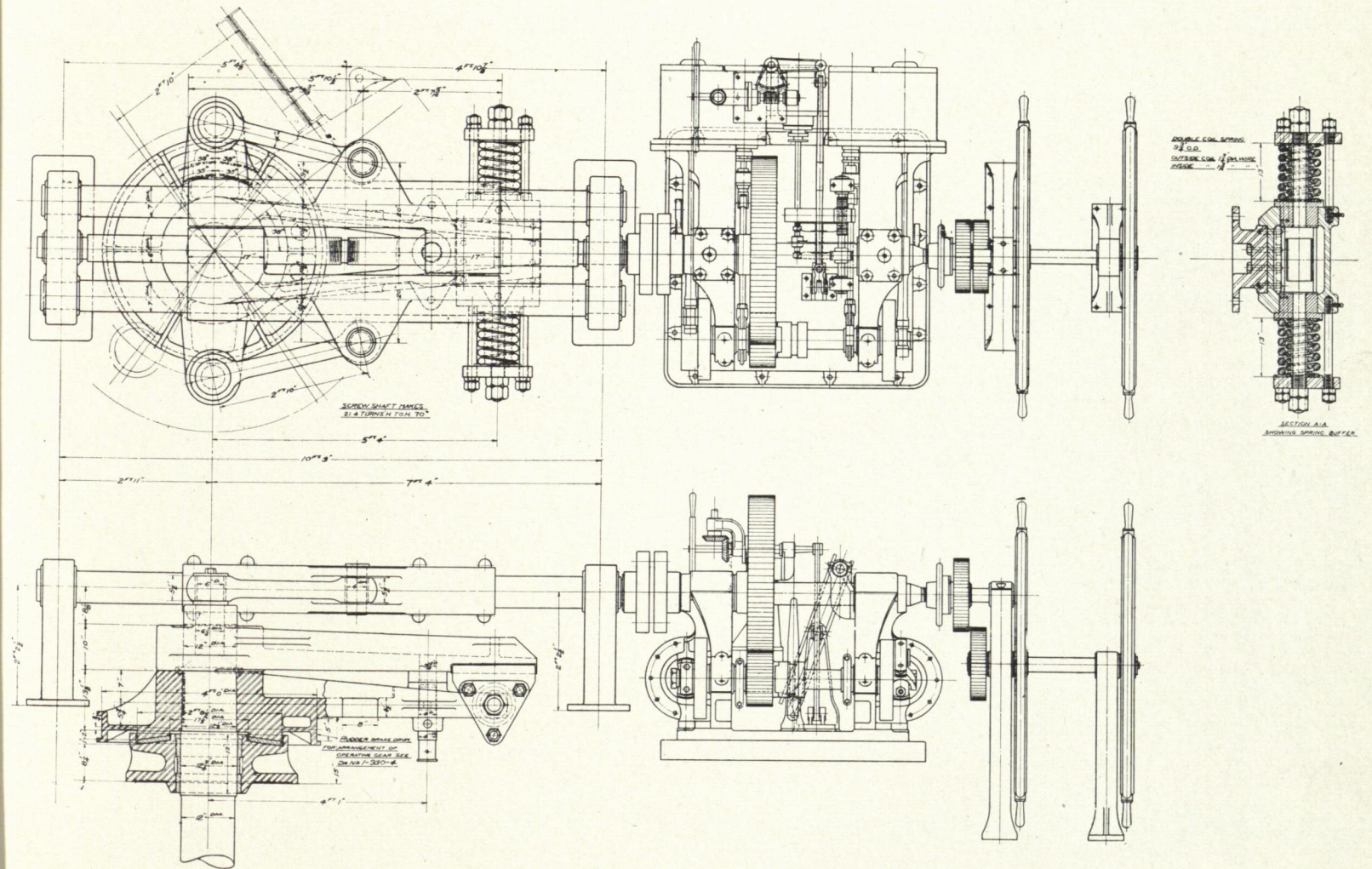
TWO-PASS CONDENSER, CIRCULAR TYPE
BUILT BY ROBT. WETHERILL & CO., INC.



8" x 8" ENGINE WITH 14" CIRCULATING PUMP
BUILT BY ROBT. WETHERILL & CO., INC.

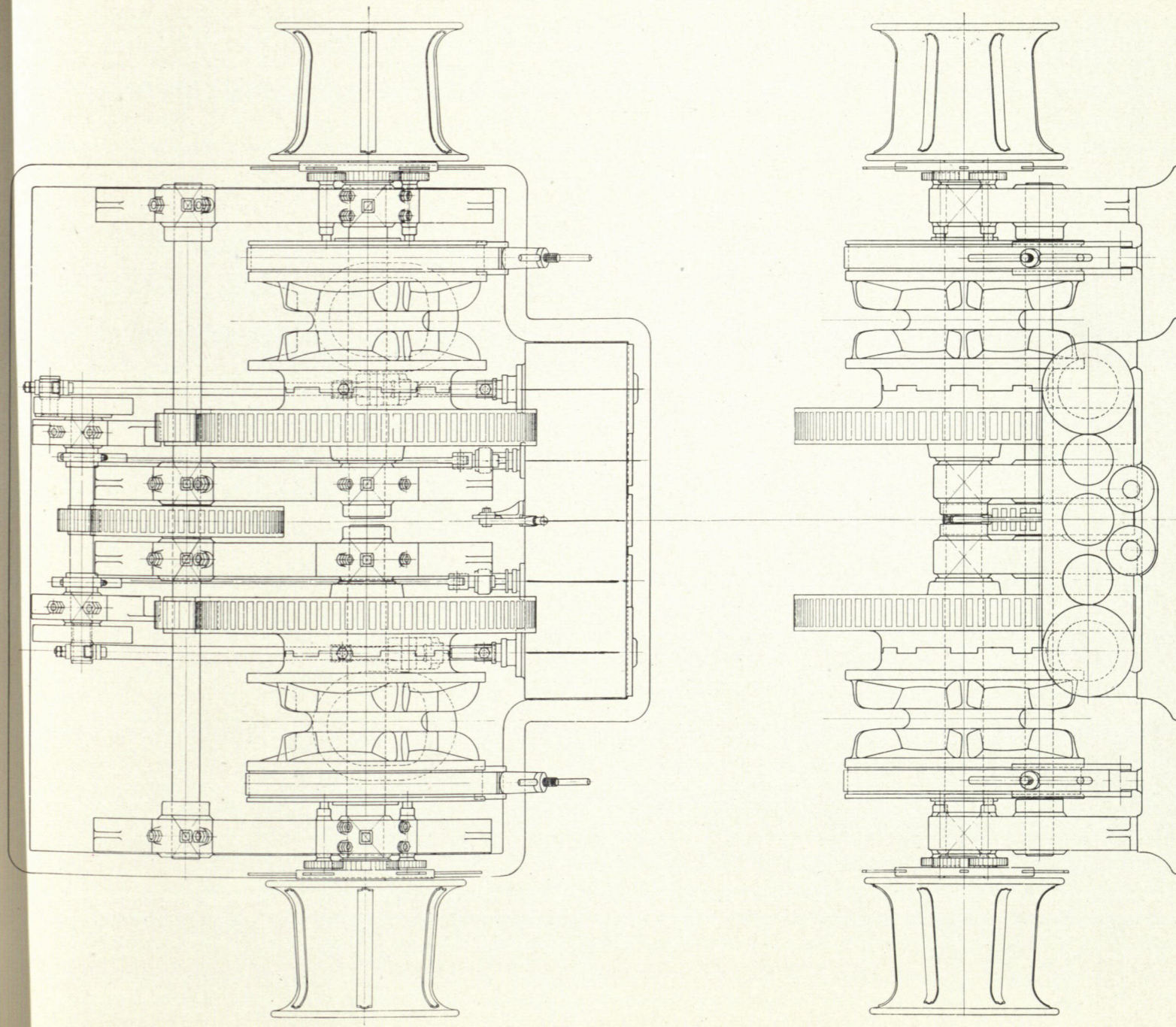


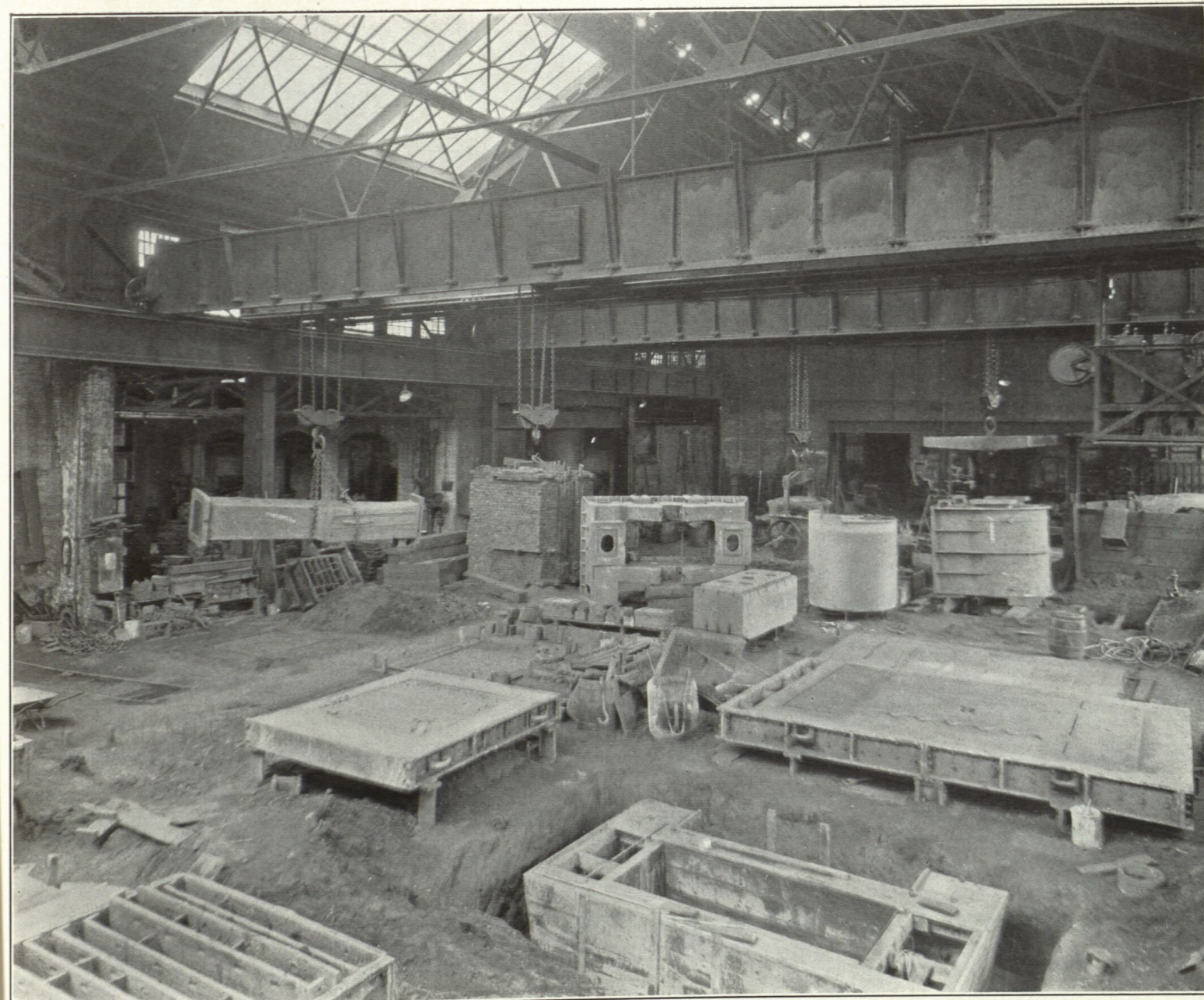
10" x 10" STEERING ENGINE
BUILT BY ROBT. WETHERILL & CO., INC.



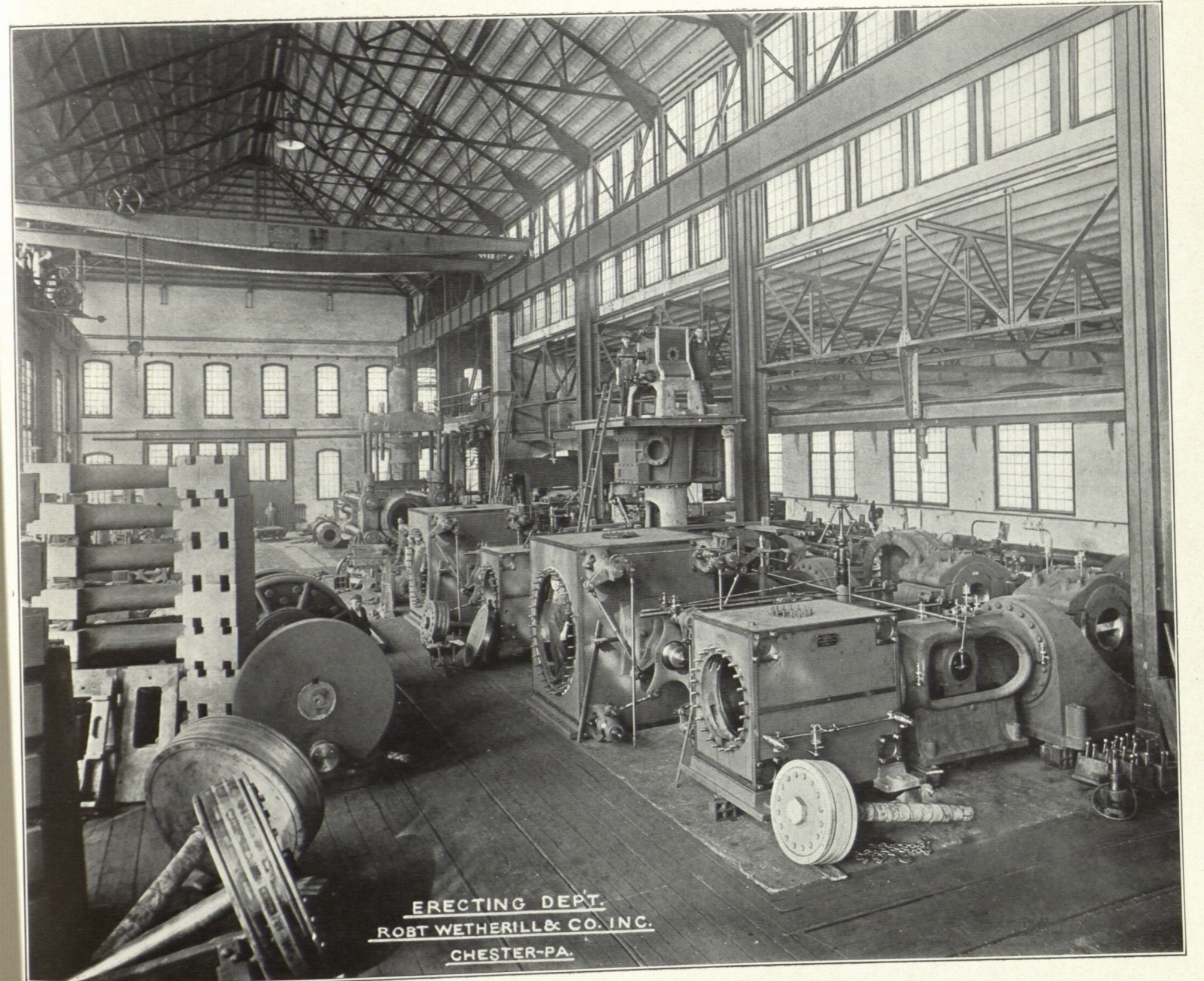
ARRANGEMENT OF STEERING GEAR AFT. ENGINES AND GEAR COMPLETE
 BUILT BY ROBT. WETHERILL & CO., INC.

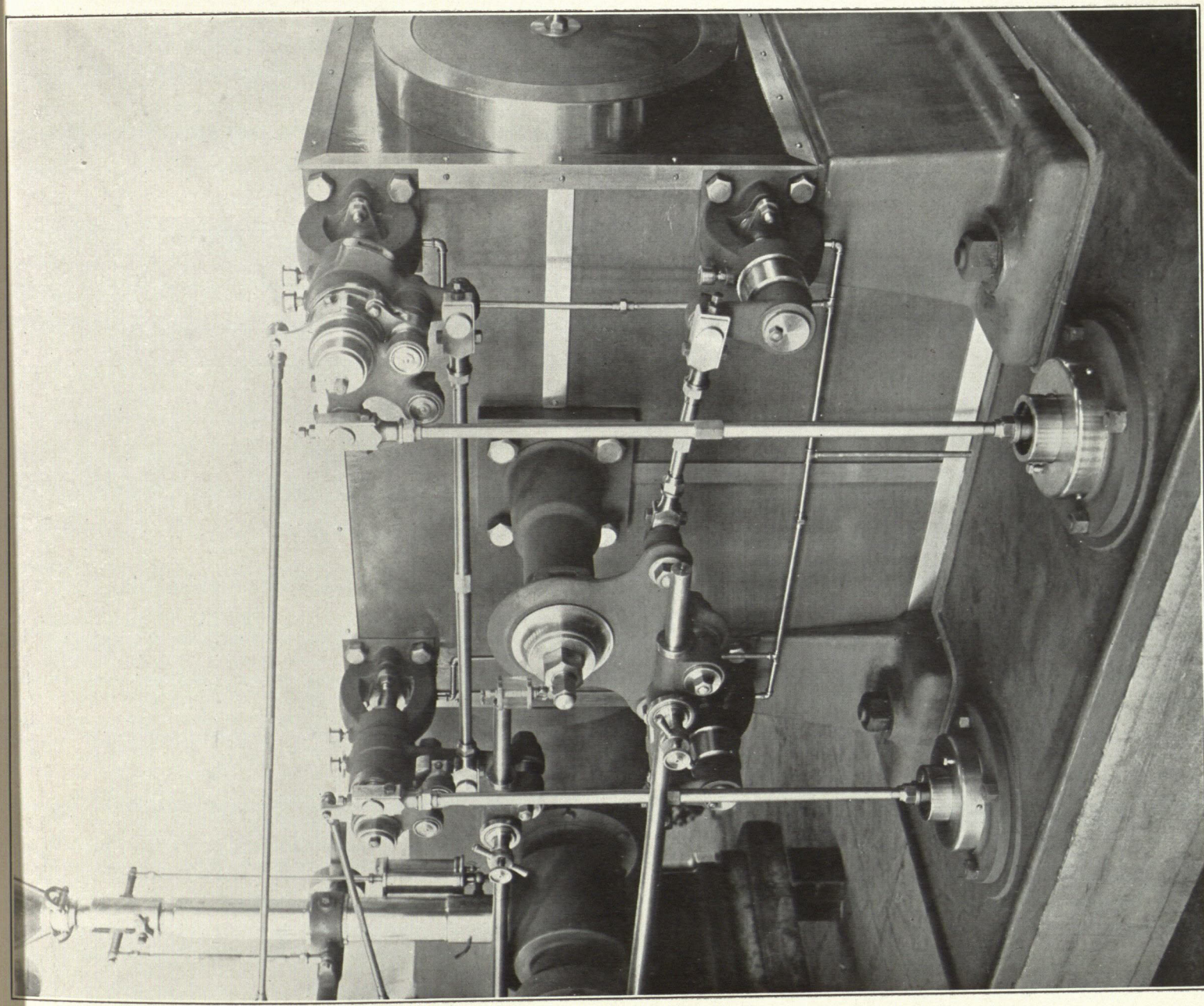
Compensating Gear Patented by Mr. J. H. Peew, Patent No. 1,290,337.



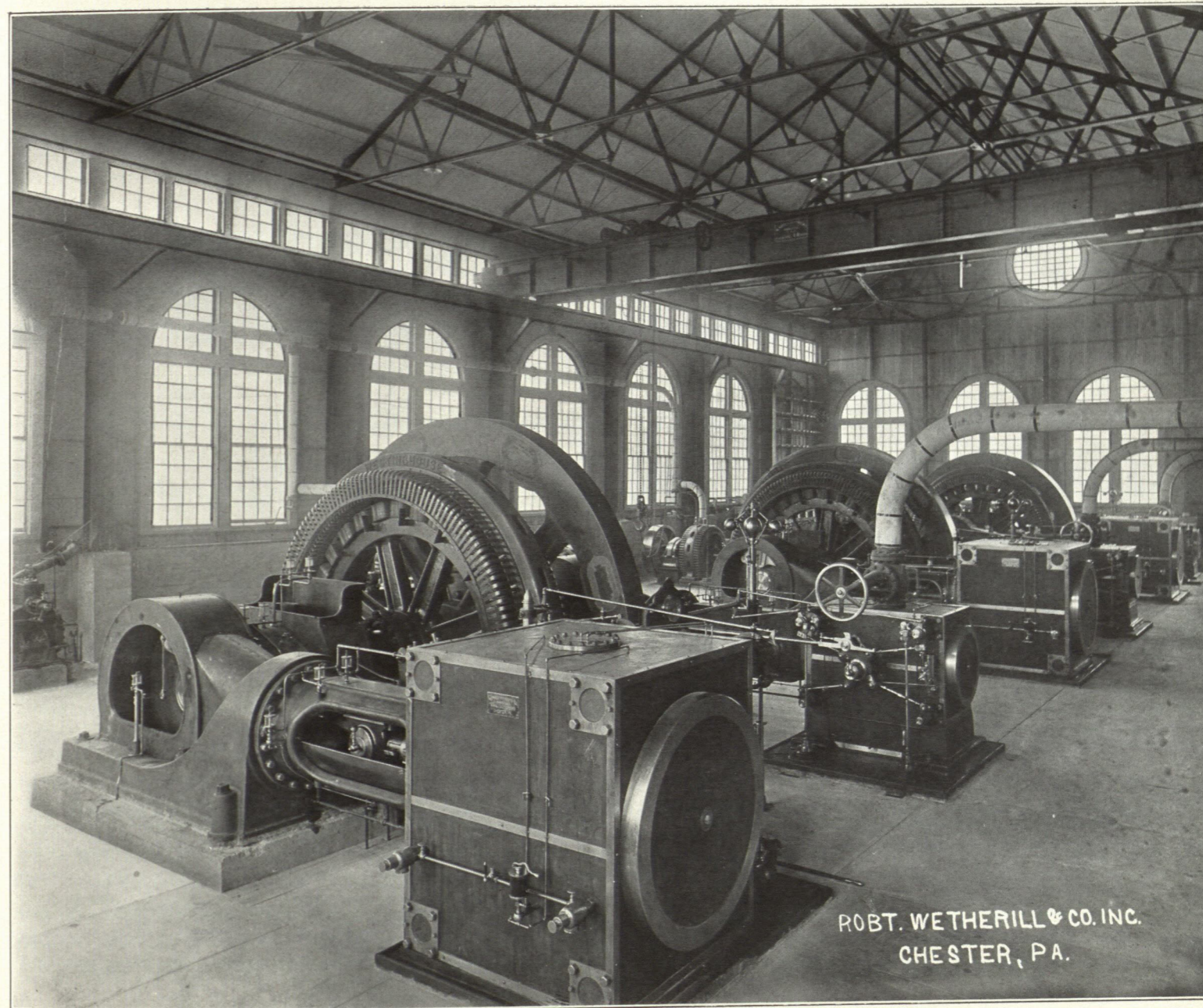


INTERIOR OF ONE FOUNDRY BAY
ROBT. WETHERILL & CO., INC.

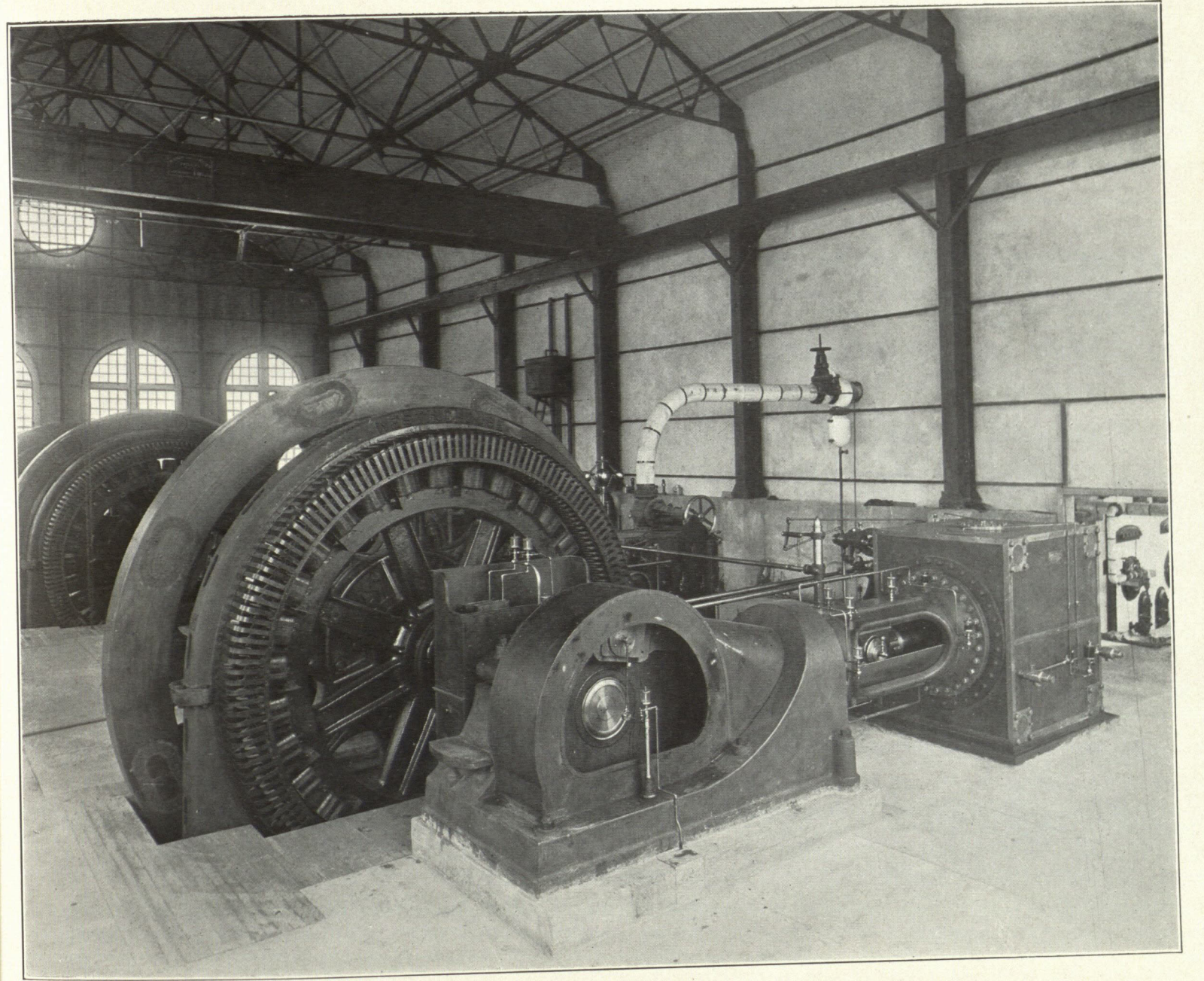




VALVE GEAR OF CORLISS ENGINE
MANUFACTURED BY ROBT. WETHERILL & CO., INC.



ROBT. WETHERILL & CO. INC.
CHESTER, PA.



POWER PLANT INSTALLATION
ENGINES MANUFACTURED BY ROBT. WETHERILL & CO., INC.