

Who's Who
in
Delaware County



1925
PRESS OF CHESTER TIMES

John C. Donahue
Editor

FOREWORD

IN presenting this graphic summary of the achievements of leading citizens of Delaware County, Pennsylvania, we feel that we are doing a service which has long been neglected. For several years there has existed a definite need, even a demand for such a work as this volume will embrace. From the newspapers, the magazines and other sources, has come to the editor of this work, a sustained inquiry for information and photographic material pertaining to those whose identity is so closely merged with the progress, growth and development of Delaware County.

In its compilation it has been necessary to eliminate, rather than to urge representation in order to maintain a standard in keeping with those who alone bear the qualifications which were the basis of their selection.

Here will be found the leaders in every line of endeavor—industry, letters, education, statecraft, social progress and the professions. To them instinctively looks every cause which is designed to promote the general welfare. It is with a view to diffusing the knowledge of their works, and in rousing in the hearts of those who shall come to citizenship after them a desire for similar patriotic service that this book is brought before the public.

“Who’s Who in Delaware County” is intended to answer the very question implied by its name.

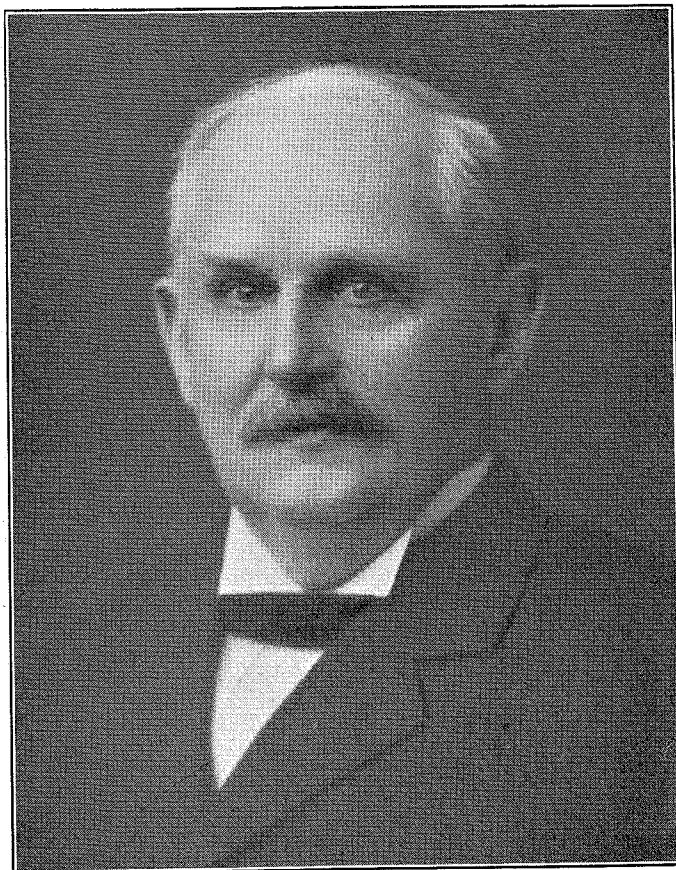
JOHN T. DONAHUE
Editor



WILLIAM C. SPROUL

Sproul, Wm. Cameron

WM. CAMERON SPROUL, Manufacturer and Capitalist, resides at "Lapidea Manor," in Nether Providence township. Prior to his election to the Governorship in 1919 he served as Senator from Delaware County from 1896, and in 1903-1905 he presided as President of the Senate. He served as Delegate to the Republican National Conventions in 1916, 1920 and 1924. His clubs are the Union League, where he served as President 1917-1918, Philadelphia Club, Art Club, Chester Club, Springhaven, Corinthian Yacht, Bankers', India House, Manhattan, N. Y., and Congressional Country Club, Washington. He is a 33rd Degree Mason. His societies are the Phi Beta Kappa, Kappa Psi, Sigma Xi, Pennsylvania and Delaware County Historical Societies and Swedish Colonial. Governor Sproul was born at Colerain Township, Lancaster County, September 16, 1870, the son of Wm. Hall Sproul and Deborah Dickinson Slokom Sproul. On January 20, 1892, he married Emeline W. Roach, daughter of John B. Roach. Their two children are Dorothy (Mrs. L. B. Sharples), and Captain John R. Sproul. He is President of the General Refractories Company and Director of the Lackawanna and Wyoming R. R., Scranton and Wilkes-Barre Corp., Penn Mutual Life Insurance Co., P., B. & W. R. R., Bank of North America and Trust Company, Delaware County National Bank, and the First National Bank of Chester, etc. He has had degrees conferred upon him by Swarthmore, Lafayette, University of Pittsburgh, U. of P., Pennsylvania Military College, etc. He is a member of the Society of Friends. His hobby is history and patriotic subjects, having restored the old Chester Court House and returned it to the city. His sports are hunting and fishing.



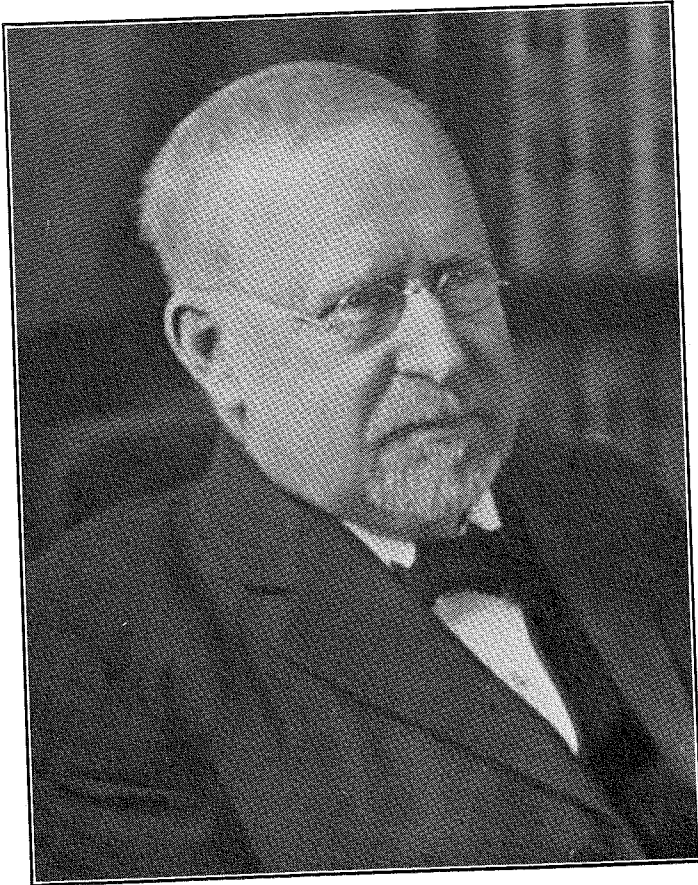
Wetherill, Richard

RICHARD WETHERILL, of Chester, President of the Chester National Bank, is one of the pioneers who made possible this great industrial center. Just what the name Wetherill meant to the iron and steel industries, a score or more years ago, is now history. As manufacturers of the Corliss Engines, the name Wetherill is known throughout the world. For more than a decade Mr. Wetherill has devoted his time to banking. He is Vice President of the Cambridge Trust Company, in addition to being President of the Chester National Bank. He serves on the directorate of several banks and public utility companies. His one hobby is business. He was born in 1850, on September 28th. His family consists of his wife, two daughters and two sons. In politics he is a Republican, and is a member of the Episcopal Church. He is a member of the Masonic fraternity, and his clubs are the Union League, Philadelphia, Chester, Springhaven Country, and Seaview Golf Club of Absecon, N. J.



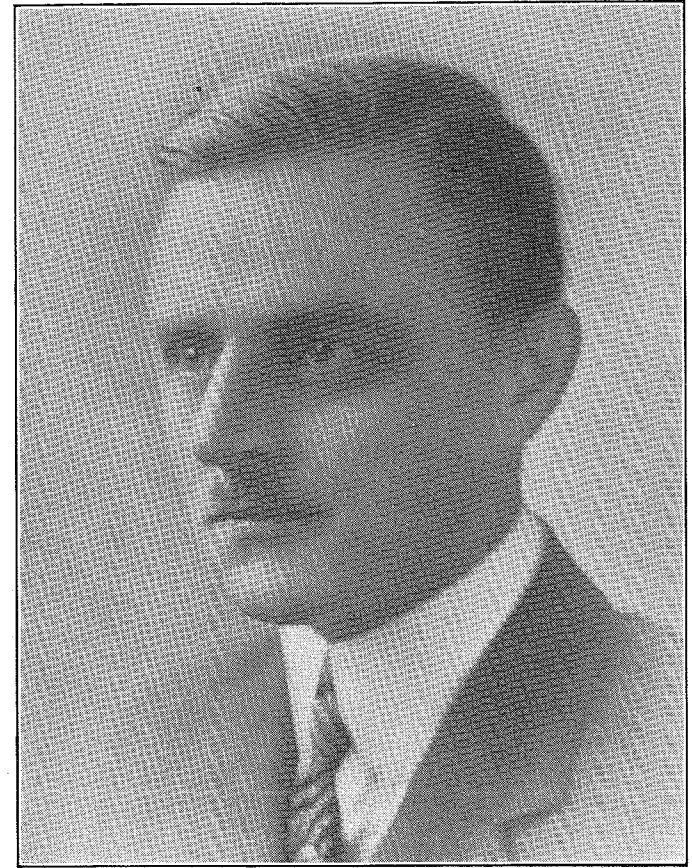
Fronefield, Judge W. Roger

JUDGE W. ROGER FRONEFIELD was elevated to the bench of the Court of Common Pleas of Delaware county by Governor Pinchot on September 3, 1925. He resides in Moylan. One of the foremost members of the Bar in this county. At the time of his going on the bench was President of the Charter National Bank of Media. He was born in 1864, on November 22nd. Mr. Fronefield has the degrees, M. E. L. L. B. On June 29, 1892, Mr. Fronefield married Phelina Marshall Lewis, who died June 18, 1922. His two daughters are Elizabeth Lewis Fronefield, who married Alfred H. Porter, and Louise Fronefield, who attends Goucher College, Baltimore. Mr. Fronefield in politics is a Democrat. He is a communicant of the Episcopal faith. He is a member of George W. Bartram Lodge, F. & A. M.



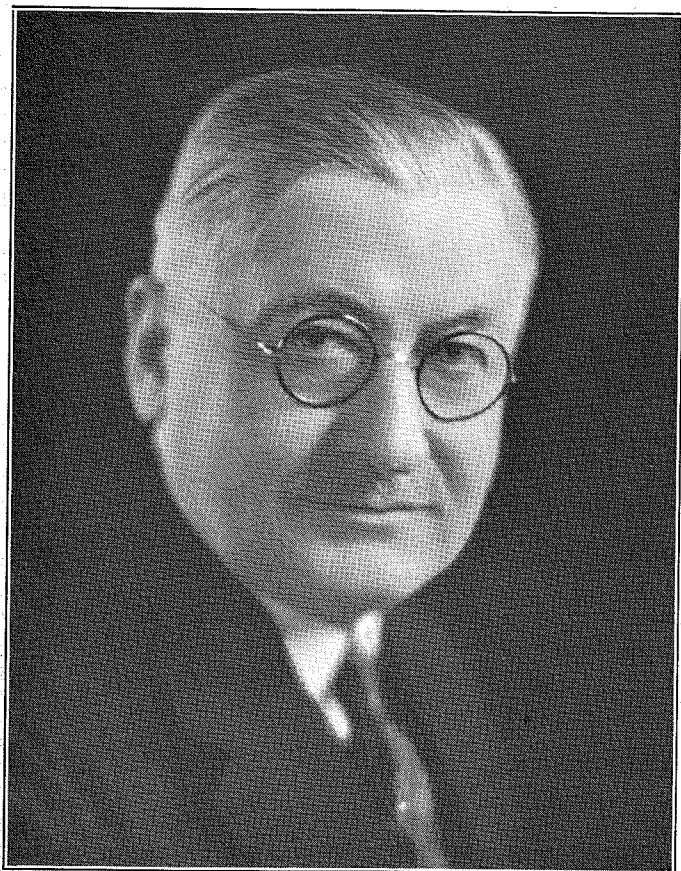
Johnson, Judge Isaac

JUDGE ISAAC JOHNSON, President Judge of the Courts of Common Pleas and Quarter Sessions of Delaware county. He resides in Media. He is a member of the Masonic fraternity, Grand Army of the Republic, also the Historical Society of Pennsylvania and the Historical Society of Delaware county. He was born in 1841 on August 11th, and although past the four score milestone, is one of the most active men on the bench throughout the State. For many years Judge Johnson served as Chairman of the State Board of Charities. As Captain Isaac Johnson, he served throughout the entire Civil War. Few men during their lifetime, have enjoyed the many splendid tributes paid him by those from every station in life. In politics he is a rock-ribbed Republican. He is a widower. Judge Johnson long since won for himself a place in the hearts of those who go to make up the rank and file. He attributes the splendid health that he enjoys to his one hobby, fishing.



Wolfenden, James

ONE of the most successful among the younger men of affairs, in Delaware County, is James Wolfenden, who resides in Cardington, where are located the huge mills of the Wolfenden Shore Company, of which he is President. Mr. Wolfenden is a 32nd degree Mason, a member of the Shrine, as well as a member of the Brookline Square Club, and the Craftsman's Club. He was born on July 25, 1889, the son of John T. Wolfenden and Pherenna Boyer Wolfenden. He is a communicant of the Presbyterian faith. Mr. Wolfenden is married, his wife being Violet Champion Wolfenden. They have a son, John, and a daughter, Florence Esther. A director of the First National Bank, Clifton Heights and of the 69th Street Title and Trust Company. Mr. Wolfenden's hobby, in a large measure, is derived from his work, although soccer-football might also come under this heading. He is a Republican, taking an active part in the community in which he resides. His sports are gunning and fishing.



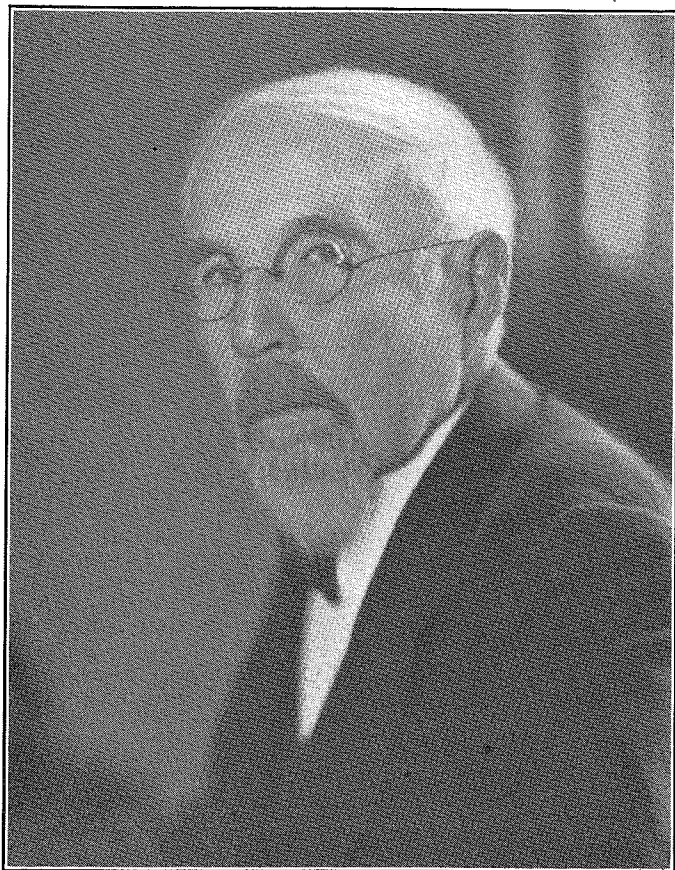
Comerford, Michael J.

THE name of Michael J. Comerford, ranks well toward the top of the list of men who have contributed in a large way, toward the development of Delaware county. Born in Minersville on May 13th, 1863. He is President of the Taylor Hospital, Ridley Park, and Director of the Ridley Park National Bank. As Merchandise Manager of Strawbridge & Clothier, he has travelled extensively throughout the world, visiting Europe one or more times a year. He is a member of the Manufacturers' Club, Philadelphia, the Aronomink Golf Club, as well as of the Friendly Sons of St. Patrick. His wife is Isabella M. Sullivan Comerford and his children are Joseph B., Robert A., and Mary Comerford MacCarter. In politics, he is a Republican and belongs to the Roman Catholic faith. Golf and fishing are his hobbies.



Ward, William, Jr.

WILLIAM WARD, JR., Prothonotary of the Courts of Delaware County, resides at 7 West 24th Street, Chester. Mr. Ward is a Real Estate Broker and in the General Insurance field. He is a member of the Masonic fraternity. His clubs are the Chester and the Alpha Boat. He is a member of the Delaware County Historical Society. Was born in 1865 on July 7, the son of William Ward and Clara Ulrich, his father having been a member of Congress from Delaware county. Mr. Ward has held various offices. He has served in the Legislature, as a City Commissioner and as Mayor of the city of Chester. He is a member of the Episcopal faith. He is married, his wife being Mrs. Rosa M. Ward.



Broomall, Judge Wm. B.

AS Judge of the Courts of Common Pleas and Quarter Sessions, Judge William B. Broomall has served his beloved Delaware county faithfully for many years. As a Sergeant, he served the colors during the Civil War as a member of the 124th Pennsylvania Volunteers. He was born on January 30th, 1843, the son of John M. Broomall and Elizabeth Booth Broomall. He is married, his wife being Mrs. Anna M. Hinkson Broomall. Resides at 701 E. Fourteenth street, Chester. He is a member of the Union League, Philadelphia, Penn Club and Chester Club. His societies are the Pennsylvania Historical, Delaware County Historical and the Swedish Colonial. He received the degree A. B. from Haverford College. Aside from his beloved law books, his principal hobby is astronomy. He is a Republican in politics and in religion is of the Quaker persuasion. Golf, baseball and cricket form the trio of sports he enjoys most.



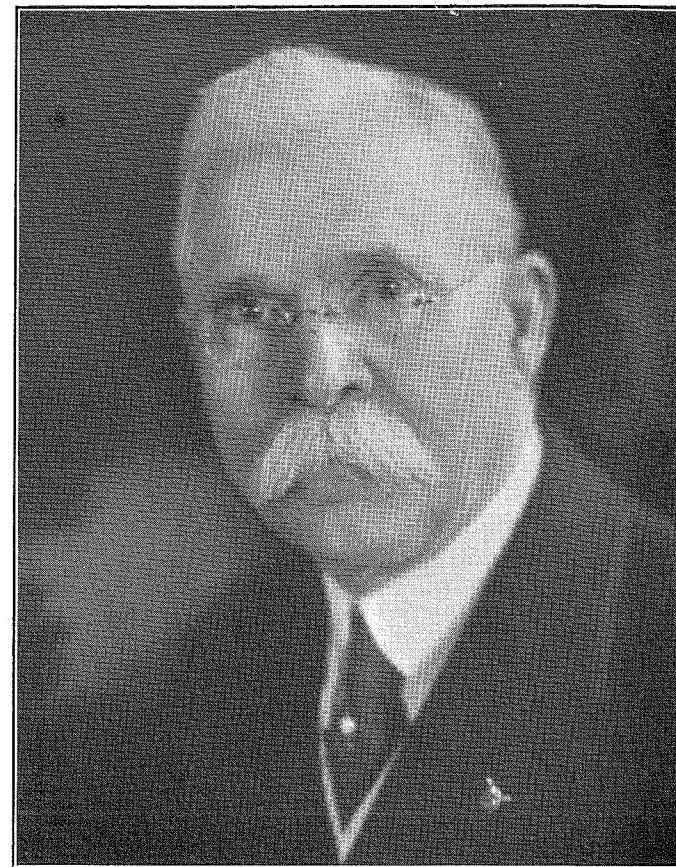
Granger, Albert R.

ALBERT R. GRANGER, is Vice-President and General Manager of the Delaware County Electric Company. He is an indefatigable worker in furthering the interests of big business in this vicinity. Mr. Granger was born in Philadelphia on April 1st, 1875. He has occupied many positions of public and semi-public character. He was a former Sheriff of Delaware county. He resides in Upland, is married and has a son and a daughter, and is of the Presbyterian faith. Mr. Granger serves on the Directorate of the Delaware County Trust Company; the Delaware County Electric Company; the Manufacturers' Association of Delaware county. He is a Mason, a member of Lu Lu Temple, the Elks, Moose, K. of P., P. O. S. A. and a member of the National Electric Light Association. His clubs are the Chester, Springhaven, Rose Tree, Jackson Landing Gunning and Fishing, Rotary, Alpha Boat and the Manufacturers' of Philadelphia. He is an ardent fox hunter and a splendid horseman, these sports running second only to gunning and fishing.



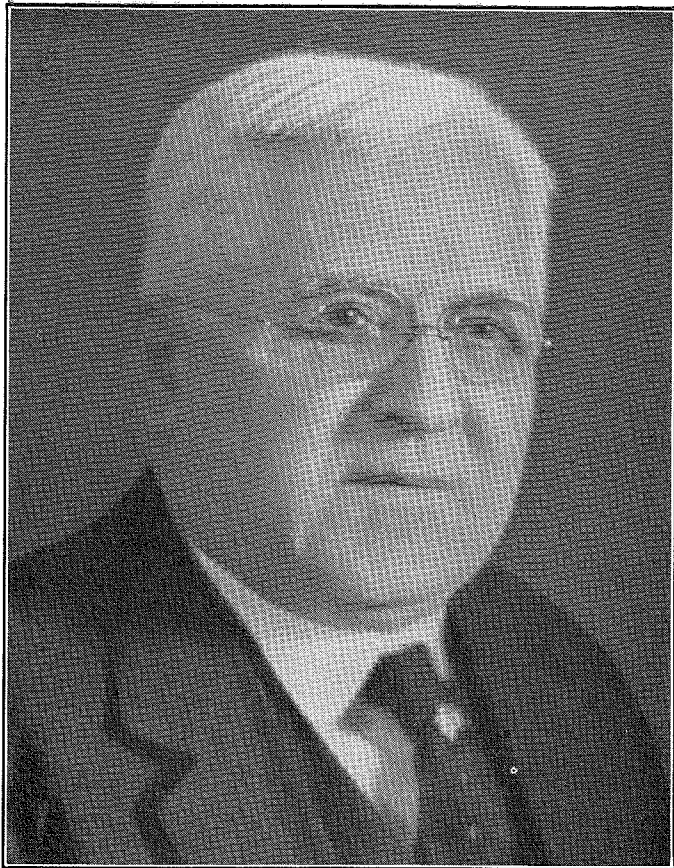
Lutz, J. Milton

J. MILTON LUTZ, banker, resides in Upper Darby Township. As president of the First National Bank of Clifton Heights, Mr. Lutz, in a large measure, is responsible for the rapid growth of the district. He assisted in organizing the West Philadelphia bank in 1911, and was chosen President, which position he held until the West Philadelphia bank was absorbed by the Bank and Trust Company of West Philadelphia, of which he is President. He also serves on the Board of Directors of the Lansdowne National Bank. Mr. Lutz is a member of the Masonic fraternities, Lu Lu Shrine and Knights Templar. His clubs are the Union League, Aronimink Golf, Craftsman's and White Apron. He was born in 1856, on October 18th, at Three Tuns, Montgomery county. His parents were George M. Lutz and Mary Martha Collom. For forty-three years Mr. Lutz has served as school director in Upper Darby. He is trustee and treasurer of the State School at Spring City. He is a Director of the Bankers' Bond and Mortgage Company and Vice President of the Mione Manufacturing Company. In politics, he is a Republican, having served in the Legislature in 1907, and for nine years, was chairman of the Delaware County Republican Executive Committee. He is a Methodist. He is married, his wife being Mary J. Dermond and their three children are Louise M. Howard M. and Maria M. Lutz, the wife of Frank



Kershaw, Nelson

NELSON KERSHAW, manufacturer and mill owner, lives in Upper Darby Township, Delaware County. He is a member of the Masonic fraternity, Lansdowne Lodge, 711, University R. A. Chapter, 256, Corinthian Commandery, 53, K. T. A member of the Manufacturers' Club, Philadelphia, and the Craftsmen's Club, Drexel Hill. He is a member of the Pennsylvania Society, New York and the St. Georges Society, Philadelphia. Born in England, at Bradford, on February 2nd, 1857, the son of John Kershaw and Ruth Rickard Kershaw. He serves on the directorate of the First National Bank, Clifton Heights and Lansdowne National Bank, Lansdowne. He is a Presbyterian. In politics a Republican, having been a member of the Board of Commissioners, Upper Darby, for the past fifteen years, five years of which he has served as President. His wife is Christina S. Bennett Kershaw, and their children, Mrs. J. F. Deasy, Nelson J. Kershaw and Edward H. Kershaw. His hobby is his work and he derives most of his sport from travel.



Robinson, V. Gilpin

V. GILPIN ROBINSON, Attorney-at-Law, and Banker. For many years Mr. Robinson served as President of the Media Title and Trust Company, but recently was elected to head the 69th Street Title and Trust Company. He was born on August 21st, 1851. He is a member of the Masonic fraternities. A member of the Union League, Philadelphia, Craftsman's Club, Brookline Square Club, Media Club, Media Business Men's Association and the Philadelphia Bourse. His societies are the Delaware County Historical, Geographical, Pennsylvania Historical, American Bar Association, Pennsylvania Bar Association, Delaware County Bar Association, and Vice President of the Boy Scouts of Montgomery and Delaware counties. One of the initial incorporators and founders of the Media Title and Trust Company, he still serves on its Board of Directors. For a number of years he was identified with the National Guard movement. A Republican in politics, he served as a member of the Legislature in 1911 and is a former District Attorney of Delaware county. He is a communicant of the Episcopal faith.



Hempstead, William Orlando, Jr.

WILLIAM ORLANDO HEMPSTEAD, JR., head of the old established Maritime firm bearing his name. He lives in Lansdowne, at 85 Lincoln avenue, and is a Custom House Broker. Mr. Hempstead was born on March 11th, 1882, the son of William Orlando Hempstead, Sr. and Lavina Patton Hempstead. His clubs are the Union League, Philadelphia, Druids Club, Optomists Club and the Penn Athletic Club. His wife is Kathrine Taylor Hempstead and their four children are Lillian Downing, Frances Katherine, William O. 3d, and Florence Virginia. He is a Presbyterian. In politics a Republican. His principal sport and hobby is baseball.



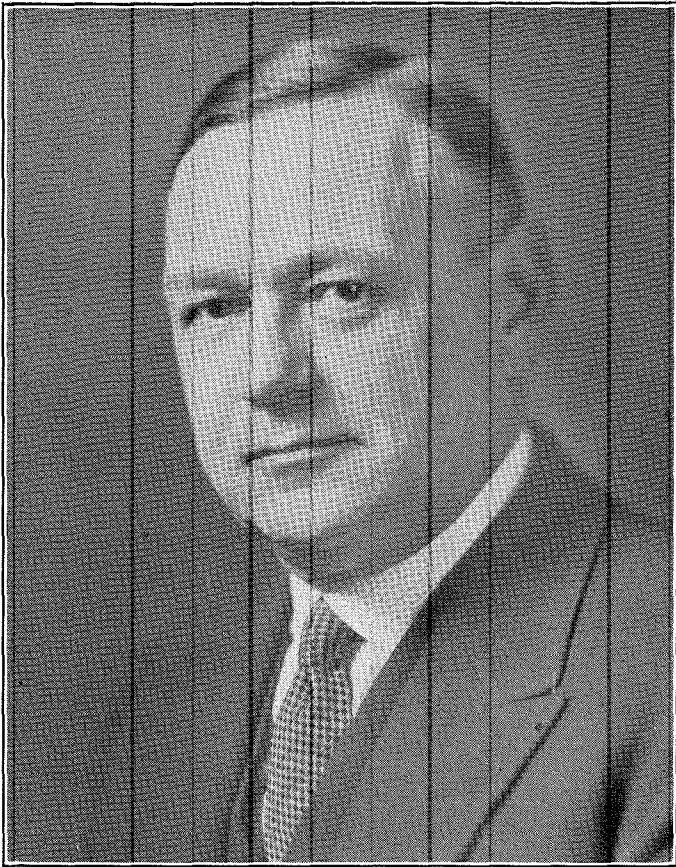
McClure, David B.

DAVID B. McCLURE, President and General Manager of the Consumers' Ice and Coal Company, Chester, was born April 20, 1865, and has been a life long resident of Delaware County. He is married and lives at Twentieth and Providence Road, Chester. He is a member of the Masonic bodies, Lu Lu Temple and the Elks. Mr. McClure is Vice-President of the Pennsylvania National Bank and is a Director of the Delaware County Trust Co., Chester. He is a Presbyterian, and in politics is Republican, having served as High Sheriff of Delaware county more than a decade ago. He is a member of the Chester, Springhaven Country, and Jackson Landing Clubs. His hobby is gunning, but golf, too, takes up a great deal of his time.



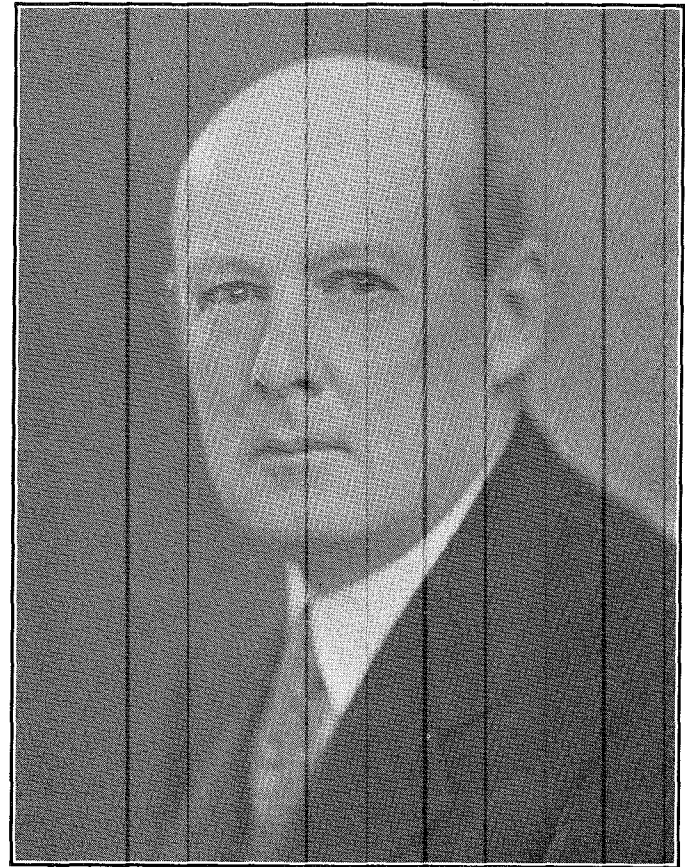
Taylor, Joshua C.

JOSHUA C. TAYLOR, who lives in Chester, is one of the most prominent members of the bar and a leading banker, being President of the Pennsylvania National Bank, Chester. He resides at 800 East Twentieth street. Among the more prominent clubs in which he holds membership are the Union League, Philadelphia, University Club, Philadelphia, the Spring Lake Country Club, of New Jersey, Springhaven, the Penn Club and the Chester Club. He is a member of fraternities of the University of Michigan and University of Pennsylvania. Born October 21st, 1873. the son of James and Martha Stott Taylor. A director in the Delaware County Trust Co., Insurance Federation of State of Pennsylvania, Penn Realty Corp., etc. He serves as President of the following: Pennsylvania Title Co., Chester Chamber of Commerce, Chester Real Estate Board, Chester Warehousing and Finance Corp., Chester Dairy Supply Company, Chester Artsilk Company. He has the degree of L. L. B., and is affiliated with the International Chamber of Commerce. He is married, his wife being Anne Rulon Gray. In politics a Republican. A member of the Episcopalian faith. Travel and outdoor sports make up his hobbies, while his principal sport is derived from golf, hunting and fishing.



Hannum, John Berne, Jr.

JOHAN BERNE HANNUM, JR., senior member of the firm Hannum, Chadwick, Hannum and Weeks, Chester, Pa., is a former District Attorney, and one of the foremost members of the Bar in Pennsylvania. A member of the American Bar Association, Philadelphia Historical Association, and Delaware County Bar Association. Is Vice-President and Director of the Delaware County National Bank. He numbers among his clubs the Chester, Springhaven Country Club, the Penn, and the Rose Tree. He is a member of the Masonic fraternities. Mr. Hannum was born in Chester on October 29, 1879. His parents are Judge J. B. Hannum and Mary Henrietta Irwin Hannum. A Republican in politics and a member of the Presbyterian faith. He is married, his wife being Helen C. Weaver Hannum and their children are Christine Potter Hannum and John B. Hannum, 3rd. His sports are golf and fishing and his hobby fox hunting, he being an ardent hunter.



Montgomery, Kingsley

KINGSLEY MONTGOMERY, Attorney-at-Law, was born in Pittsburgh, Pa., August 4, 1874. He resides at 403 E. Twentieth street, Chester. He is solicitor and a member of the Board of Directors of the Cambridge Trust Company, a member of the Board of Directors of the First National Bank, Chester, and the J. Lewis Crozer Library and Chester Free Library. He is President of the Board of Managers of the Chester Hospital. He is a member of the various Masonic fraternities, and his clubs are the Penn, Chester, Springhaven, Y. M. C. A., Union League, Philadelphia, and Rolling Green Golf Club. His wife is Alice Timmons Montgomery. He attends the Wallingford Presbyterian church, of which he is a trustee and treasurer. In politics he is a Republican. He read law with W. B. Broomall, after attending Miss Hynmann Private School, Pittsburgh, the Pittsburgh Academy and U. of P. Law School.



Ward, Hugh H.

AMONG the leading manufacturers in this district is Hugh H. Ward, of Chester, head of the firm bearing his name. Mr. Ward was born in 1866, on December 31st, the son of John L. Ward and Mary Logan Ward. His wife now deceased was Letitia Baird Christy, and their children Harry H., Alexander B., Samuel B. and Letitia Ward. Mr. Ward resides in the City of Chester at 3100 West Ninth street. He is a member of the Chester Club and the Brinton Lake Club, and an indefatigable worker in the Kiwanis Club circles having been president of the local club in 1924. He is a director of the Marcus Hook National Bank. He is a Knight of Columbus. In politics an Independent. Mr. Ward is a Roman Catholic. His hobby is his work and the sport that claims his attention most is base ball, which he has in a large measure made possible for Chester residents during the past several summers.



McClure, John J.

JOHN J. MCCLURE, who was born in the city of Chester, September 24, 1886, is engaged in a multiplicity of business activities, among which, are several of the largest in this vicinity. He is President of the Chester Construction and Contracting Co., President of the Pennsylvania Paving Co., President of the Chester Beverage Company, President of the McClure Co., and treasurer of the Allison Steel Products Co. In addition to the above, he serves on the Board of Directors of the First National Bank and Cambridge Trust Company. He is a member of the Manufacturers' Club, Philadelphia, Chester Club, and Alpha Boat Club. He is a member of the Phi Sigma Kappa Fraternity, a 32nd Degree Mason, and a member of the Shrine. His hobby is golf. In politics, Mr. McClure is a Republican and is of the Presbyterian faith. He resides at 20th and Providence Road, Chester, with his wife, Gertrude Holmes McClure, and their children, John, William J., Marjorie Holmes, and Holmes McClure.



Palmer, T. Chalkley

T CHALKLEY PALMER, retired manufacturer of dyestuffs, resides in Middletown Township, Delaware County. Since his retirement from business he has devoted much of his time to Natural Science, Microscopy and Botany. He is President of the Delaware County Institute of Science, Media; Vice-President of the Leidy Microscopical Club, Philadelphia, and a member of the Council Academy Natural Science, Philadelphia. In addition to which he is a Fellow of the Royal Microscopical Society, London; Academy of Natural Science, Philadelphia; Delaware County Institute of Science, Media; Franklin Institute, Philadelphia; American Association Advancement of Science. His clubs are the University Club, Philadelphia; the Chester Club; Media Club and the Authors Club, London. Mr. Palmer is a member of Phi Beta Kappa, Haverford, which college also conferred upon him the degree of Bachelor of Science. Born on October 23rd, 1860, near Media. He is married, his wife being H. Jane Palmer and their children being Walter Palmer and Lewis Palmer. In politics he is a Republican, which party elected him to serve as one of three members as a director of the poor in the county. Mr. Palmer is a member of the board of directors of the American Dyewood Company; Delaware County National Bank and Haverford College. He is a member of the Society of Friends. His weekly walking trips constitute his sport.



Beatty, Robert Walter

ROBERT WALTER BEATTY, Attorney-at-Law, was born June 23, 1894, the son of R. Walter Beatty and Hattie Bonsall Beatty. Just past the 30th milestone, we find him among the most prominent of the younger members of his profession in this vicinity. He is a Director of the First National Bank, Media. Mr. Beatty served in the regular army during the World War. He is a member of George W. Bartram Lodge, F. & A. M., Number 298. He is a member of the Tall Cedars of Lebanon, also the Chester, Ben Franklin, Craftsman's, Drexel Hill Tennis Club and Rolling Green Golf Club. He is married, his wife being Marion Crothers Beatty, daughter of Samuel Crothers. He lives at Drexel Hill. In politics, Mr. Beatty is a Republican; and a communicant of the Episcopal faith. His hobby is golf and tennis as well as his love of Blackstone.



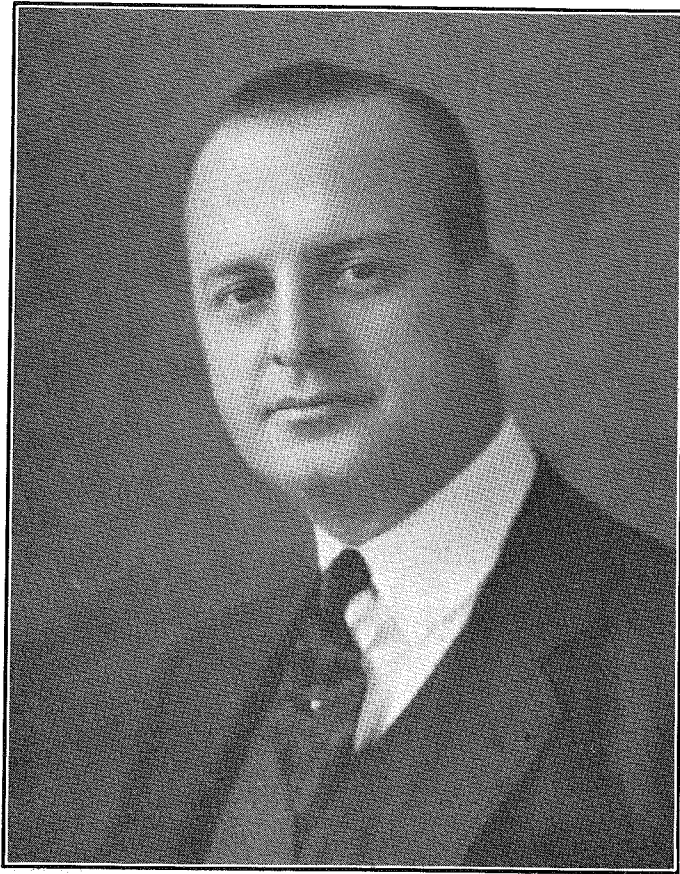
Worrilow, Chas. G.

CHARLES G. WORRILOW, one of the younger leaders in business and politics in Delaware County. Mr. Worrilow is a member of the firm of Lear & Worrilow, with offices in Chester. He resides at 106 W. 24th Street, Chester, Pa., in which city he was born on July 22, 1879, the son of David R. Worrilow and Margaret A. Pedrick Worrilow. He is a 32nd Degree Mason, a member of Lu Lu Temple, Tall Cedars, Elks, Eagles, Moose and the Saturday Night Club. In politics, he is a Republican, having served six years in Council and being at the present time, Treasurer of the City of Chester. He is a Director in the Pennsylvania National Bank, Chester. Mr. Worrilow attends the Episcopal church. He is married, his wife being Katherine Hamilton Morris Worrilow, and has one son, Richard Morris Worrilow. Mr. Worrilow is an inveterate golfer.



Eynon, John S., Surgeon

ONE of the most successful surgeons in Delaware County is Dr. John S. Eynon, of the City of Chester. In addition to his large practice, he serves as a surgeon at the Chester Hospital and is active in the work of the Philadelphia Orphan Society. He is surgical director and advisor for the largest industries in this vicinity, viz: Sun Shipbuilding Co.; American Locomotive Co.; Congoleum Company; South Chester Tube Works; Worth Steel Company and the Baltimore and Ohio Railroad. Dr. Eynon is a graduate of the University of Pennsylvania Medical College, serving during the World War as Captain in the U. S. Army, Medical Corps B. H. 34, 1917-1919. He is President of the Federal Pension Board, Chester. He is married. A member of the Baptist faith and in politics is a Republican. He is a Mason, member of Lu Lu Temple, the Delaware County Medical Society and the American Medical Association. His clubs are the Chester, Penn. Springhaven Country and the Brinton Lake. Golf and fishing are his favorite pastimes.



Mathues, Wm. Franklin

WM. FRANKLIN MATHUES, United States Marshal for the Eastern District of Pennsylvania. Mr. Mathues received his elementary education in the public schools of Media, where he was born on October 29, 1885, and later attended the Pennsylvania Military College, the Army and Navy Preparatory School, Highland Falls, New York, and the United States Military Academy at West Point. He was appointed to his present position on July 17, 1921. A member of the Delta Tau Beta Fraternity. His clubs are the Springhaven Country, West Chester Biltmore Country Club of Rye, New York, Jackson Landing Gunning and Fishing Club of Maryland, and Penn Athletic Club, Philadelphia. Mr. Mathues resides in Idlewhile Lane, Moylan. Was married February 20, 1912, to Eleanor Montgomery of New York City. They have one son, George Montgomery Mathues. He is a member of the Methodist faith. In politics he has ever been a staunch Republican. His hobby is gunning, and golf his principal sport.



Lutz, Howard M.

HOWARD M. LUTZ, Attorney-at-Law, is one of the most active of the younger members of the Bar in Delaware County. He resides in Upper Darby, and is a member of the various Masonic bodies, the Military Order of Foreign Wars and the American Legion, having served in the Army from November, 1916, until March, 1919. He was born in the district where he still resides, on November 28, 1887, the son of J. Milton Lutz and Mary J. Dermond Lutz. He is a member of the Union League of Philadelphia and the Aronomink Golf Club, also Vice-president of the Media Title and Trust Company, on whose board he serves, as well as on the Board of the First National Bank of Clifton Heights, the Lansdowne National Bank and the Mione Manufacturing Company. He received his A. B. at Haverford College and L. L. B. at the University of Pennsylvania. A member of the Presbyterian faith. He is married, his wife being Katharine TenBroeck, and their children are Howard, Katharine and Emma Mary. Mr. Lutz's hobbies are motoring, travel and golf. In politics he is a Republican.



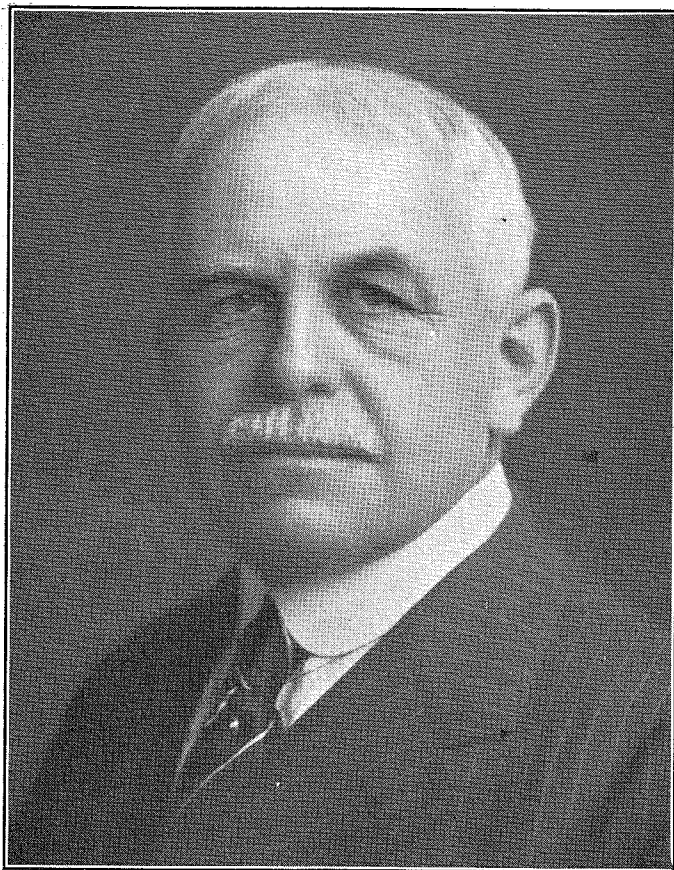
Hanna, James

JAMES HANNA, of Swarthmore, one of the leading contractors in this vicinity, is at the same time one of the most prominent in circles fraternal and social. Aside from heading the general contracting firm of John Hanna & Sons, he is treasurer of the Pennsylvania Paving Co. and the Chester Materials Co., all of whom are located in the City of Chester. He is a member of the Masonic fraternity, Lu Lu Temple, Knights Templar, Philadelphia Consistory and the Tall Cedars, as well as the Elks and the Moose. His clubs are the Chester, Springhaven Country Club, Keystone, Lu Lu Shrine, Lu Lu Yacht, the Strollers, the Artisans, the Saturday Night Club and the Delaware County Motor Club. Mr. Hanna's natal day is Christmas, being born on December 25, 1876. His parents being John and Charlotte McCurdy Hanna. He is married, his wife being Laura Blanche Erskine. John Reid Hanna and Marion Erskine Hanna Schatte complete Mr. Hanna's family. Politically he is Republican. He is a member of the Presbyterian faith. The one sport he is passionately fond of is golf.



Talbot, Grover Cleveland

GROVER CLEVELAND TALBOT, of Norwood, an executive of the Talbot Coal and Building Supply Company. Mr. Talbot is a member of the Pennsylvania Legislature from Delaware county. He was born April 23, 1885. He is a member of Prospect Lodge, F. & A. M., Philadelphia Consistory, Mary Commandery, University Chapter, Lu Lu Temple. He is a director of the Tincum Bank of Essington, Essington B. & L. and the Norwood B. & L. In politics a Republican. Mr. Talbot is married, and has two children, Elizabeth and Ellen. His wife was Elizabeth Reddick. He is a communicant of the Episcopal Church. His principal sport is golf.



Hinkson, Joseph H.

JOSEPH H. HINKSON, Attorney-at-Law and President of the Cambridge Trust Company, Chester, resides at Ridley Park. Was born in the city of Chester, on May 22nd, 1865, the eldest son of former Mayor John B. Hinkson and Kate Warrington Caldwell Hinkson. Mr. Hinkson is a member of the Union League, Philadelphia, Chester Club, Penn Club, Springhaven Country, and the Rolling Green Golf Club. He is a member of the Masonic fraternity, Chester Lodge; of which he was former Past Master, Past High Priest Chester Chapter, R. A. M., and Past Commander of Chester Commandery, No. 66, K. T. He was a member of the U. of P. Law School, Class 1886. He is a director of the First National Bank, of Chester, Ridley Park National Bank, Consumers' Ice Company and many other corporations. He is a Republican. He is married, his wife being Bessie Ward Hinkson. His son, Joseph H. Ward Hinkson, is associated with him in the practice of law. He attends the Presbyterian church.



Emmons, Lewis Cole

LEWIS COLE EMMONS of Riverview Farms, Swarthmore, Pa. An executive of the Emmons Coal Mining Company. One of the most successful coal operators in the U. S. He is a director in the Marion Center Coal Mining Company, Fallen Timber Coal Company, Big Bend Coal Mining Co., Kolb Coal Co., Emmons Coal Mining Company of West Virginia, and the Emmons Coal Mining Company. He was born on December 12, 1887, the son of Judson Browning Emmons and Harnett McCarty Emmons. Is married and has one son, Lewis, Jr. He is a member of the Masonic fraternity and a communicant of the Presbyterian Church. His hobby is registered Guernsey cattle, being the owner of several of the world's best Guernseys. Aside from his hobby of raising blooded stock, he derives much of his sport from fishing. In politics, he is a Democrat.



Faison, Wm. A.

• ONE of the most successful of the younger manufacturers in this great industrial district is William A. Faison, President of the Atlantic Steel Castings Company, Chester. Mr. Faison is also an Executive of the Delaware County Manufacturers' Association, and resides at 23 Parkway avenue, Chester. He is a member of the Kappa Sigma Fraternity and has received the degree of B. E. from North Carolina College, 1909, and the degree of Bachelor of Science from University of Illinois, 1911. He is a member of the Masonic fraternity. Was born in Goldsboro, N. C., on August 6, 1889, his wife having been Miriam Ellison. They have four children, Miriam, Marjory, William A. Faison, Jr. and Sara R. Mr. Faison is a Republican, and a member of the Presbyterian faith. Gunning and fishing are his principal sports.



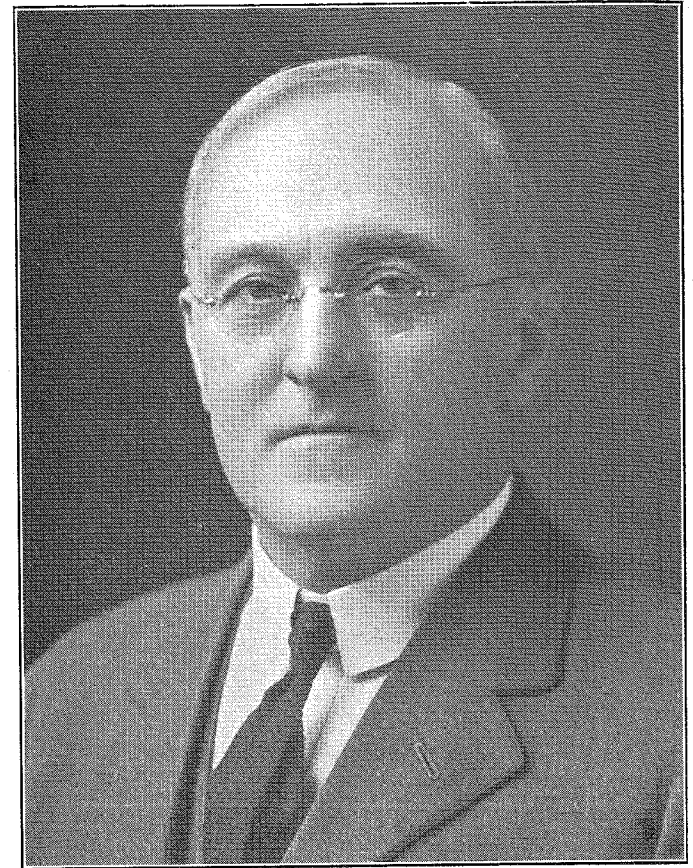
Shattuck, John David

JOHN DAVID SHATTUCK, Consulting Gas Engineer and General Manager of the Philadelphia Suburban Gas and Electric Company, resides in Ridley Park. Mr. Shattuck holds a degree of P. B. S. from Yale, 1891, and that of C. E. from Yale, 1893. He was born on August 22nd, 1868, at Norwich, N. Y. He is married, his wife being Frances Fitch Shattuck. Mr. Shattuck is a Director of the Cambridge Trust Company, Chester, Cooper Creek Chemical Company, Consulting Engineer of the Tampa Gas Company, Tampa, Fla., the Panama Colon Company, Panama. His clubs are the Union League of Philadelphia, the Yale of Philadelphia, Yale of New York, Springhaven Country Club, Seaview Golf Club, Chester, Rolling Green Golf Club. He is a member of the American Gas Association, Southern Gas Association, Pa., Gas Association, Old Colony Club, and Franklin Institute. He attends the Presbyterian church. In 1912 Mr. Shattuck was President of the National Commercial Gas Association. To him goes the credit for developing the high pressure distribution that has made gas possible throughout this county. In politics, he is a Republican, and his sports are golf, hunting and fishing.



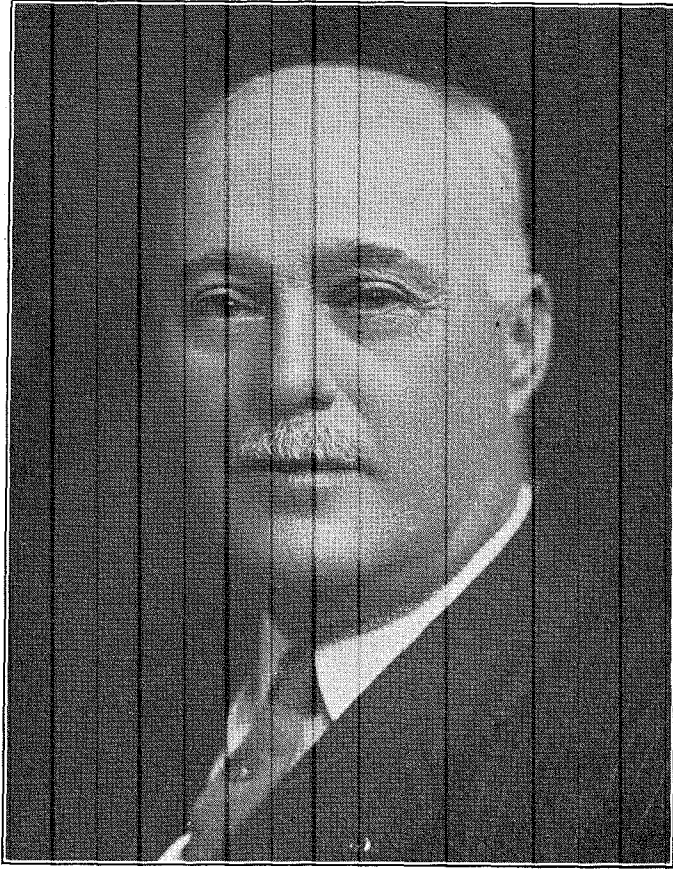
Hopkins, Charles W.

CHARLES W. HOPKINS, who resides at Ridley Park, is President and General Manager of the Hopkins Piano Company of Chester. Mr. Hopkins was born at Rockdale, August 25, 1889, the son of S. Frank Hopkins and Sarah Sandom Hopkins. His clubs are the Piano Club, New York City, Brinton Lake Country Club, Kiwanis, Keystone Automobile Club and the Chester Club. He is a member of the Methodist church. Is married, his wife being Harriette Smith Park Hopkins, and their children are Kathryn Virginia, Harriette Park and Dorothy Edith Hopkins. Mr. Hopkins is a Republican. Golf and fishing are his principal sports. He is a leading fraternalist.



Hamilton, James M.

FEW Delaware Countians have played as all important a part in community betterment than has James M. Hamilton, County Commissioner, who resides at Elwyn, through whose indefatigable efforts better roads and better bridges have been built throughout the county. Born in Montgomery County, September 11th, 1864, the son of John and Margaret Hamilton, he heads a business founded by his father ten years later in Chester. Since 1874 the name of Hamilton has been identified with the business life of the City of Chester, in the manufacture of mill-work, packing boxes and a general lumber business, with their plant at Sixth and Barclay streets. Mr. Hamilton served as Postmaster at Chester, being appointed by President Taft. Since 1920 he has served as a County Commissioner, winning his first term after a bitter political battle and his second without opposition of a serious nature. In 1887 Mr. Hamilton married Pearlra Valentine. His family consists of one daughter and five sons. He is a member of the Methodist Church, and in politics a Republican. His twin hobbies are baseball and politics.



Turner, Samuel E.

FOR many years, a leading member of the Fourth Estate, Samuel E. Turner is now Chief Magistrate of Delaware County's largest community. As Mayor of the city of Chester, he has started to build well. Mayor Turner was born on September 26, 1865, the son of George W. Turner and Jane Faulkner Turner. He is a bachelor. A member of the Chester Club, Kiwanis, Springhaven Country, Pen and Pencil Club of Philadelphia and Keystone Masonic Club. He is a 32d Degree Mason, a member of Lu Lu and the Philadelphia Consistory. During the late War, Mayor Turner served throughout Eastern Pennsylvania, as Judge on the Government Exemption Board. Served as Sergeant at Arms, House of Representatives, 1893, and for twelve years was in Council, ten of which, he presided as President. He is a Methodist and in politics, of course, Republican. His joint hobbies are journalism and travelling.



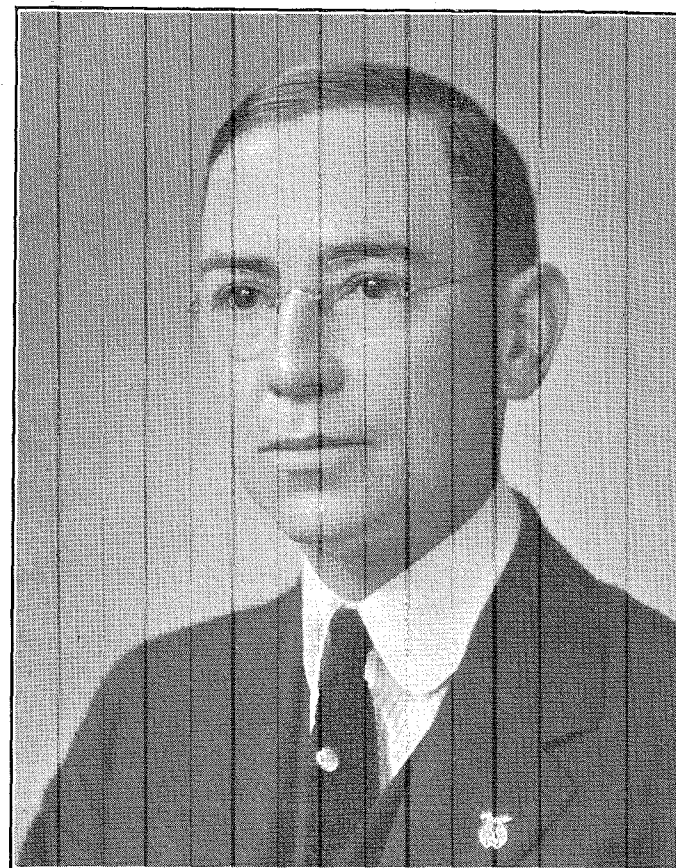
Walker, Isaac Stanley

ISAAC STANLEY WALKER, Civil Engineer and General Manager of the New Chester Water Company, Chester. Mr. Walker is a member of the Engineers' Club of Philadelphia, Chester Club, and the Rotary Club of Chester. He is a member of the Masonic fraternity. Among his societies are the American Society of Civil Engineers, American Water Works Association, New England Water Works Association, Pennsylvania Water Works Association, American Society of Municipal Improvements, and a member of the Executive Committee of the Pennsylvania Public Service Information Committee as well as a Fellow of the American Public Health Association. Was born July 10, 1883, the son of Isaac Walker and Hannah Singleton Walker. He is a Director in the Vincennes Water Supply Company, Vincennes, Ind., and the Greencastle Water Company, Greencastle, Ind. In politics, he is a Republican and a communicant of the Presbyterian faith. He is married, his wife being Lillie Margaret Winters Walker and they have five children. Mr. Walker has been General Manager of the New Chester Water Company since September, 1918. He resides in Frankford, Philadelphia. His hobby is sanitary engineering.



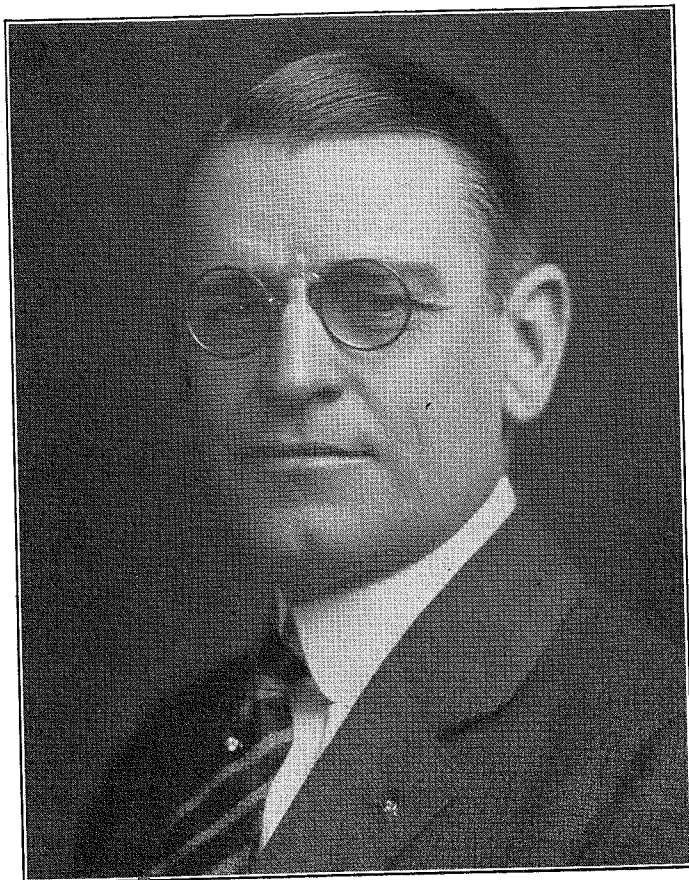
Craig, Walter H.

WALTER H. CRAIG, who is Chester's representative in the General Assembly, is an indefatigable worker in the interests of those whom he represents at Harrisburg. Born in Chester, February 24, 1880, we find him retired from business at two score and four years of age. He organized the Penn Ice Works, selling his holdings in 1920, when he retired from active business. Since this time, he has travelled at length. He is a member of the various bodies of the Masonic fraternity, the Chester Club, and many fraternal orders. In politics, he is Republican. His wife was Etta James. They reside in Chester at 24th and Crozer streets. Mr. Craig's hobby rests between his duties as a public servant and travelling.



Fulton, William J.

THROUGHOUT Eastern Delaware county, few men have a wider acquaintance than Wm. J. Fulton, Commissioner of Haverford Township around whom this story is woven. Mr. Fulton resides at 37 Bellemeade avenue, South Ardmore. He is one of the most active men in every movement toward the betterment of the community in which he lives. In politics, Mr. Fulton is Republican. He is also one of the best known Jewelers in this part of the country, with headquarters in the Jefferson Building, Philadelphia. He is a member of St. John's Commandery, a 32nd Degree Mason, and also a member of the Lu Lu Shrine. He has served on the directorate of the Brookline Square Club since it was organized. He was born in the Quaker City in 1880, on May 25th. Mr. Fulton is married and has three daughters and one son. His hobbies are fishing and hunting.



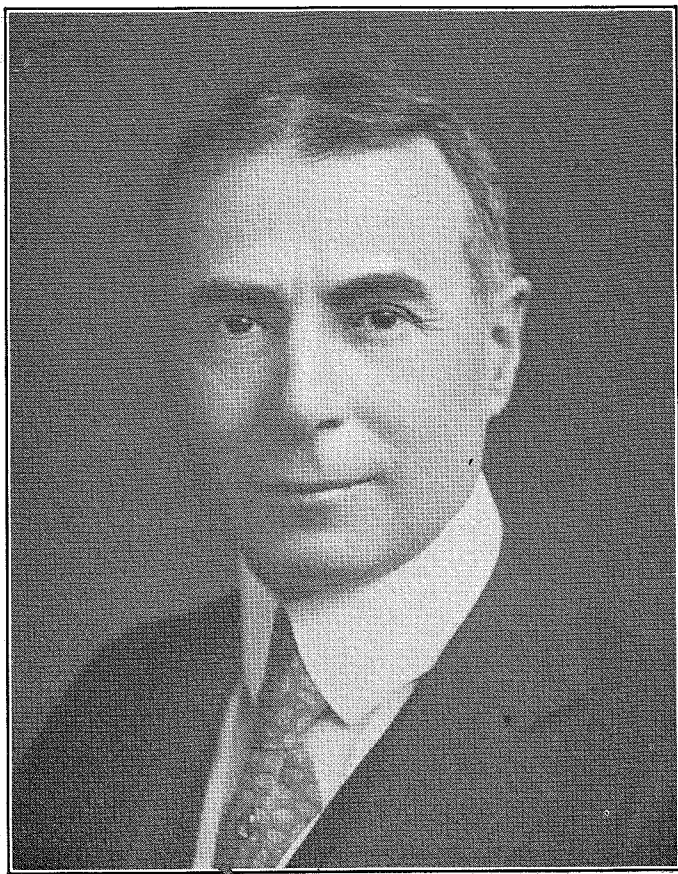
Ramsey, William T.

WILLIAM T. RAMSEY, former Mayor of the city of Chester and now County Tax Collector, is fast winning laurels for himself as a statesman. A 32nd Degree Mason, Knights Templar and a member of the Chester Club, Brookline Square, Craftsman's, Germantown White Apron and the Alpha Boat Club, in fact he is a fraternalist. Was born January 8th, 1873. He is married and has one son. He is of the Episcopalian faith. He has ever been interested in matters pertaining to the public school question and had much to do in the Legislature with the Teachers' Retirement Act. Needless to say, former Mayor Ramsey is a Republican. His hobby is politics. He is a Politician Plus.



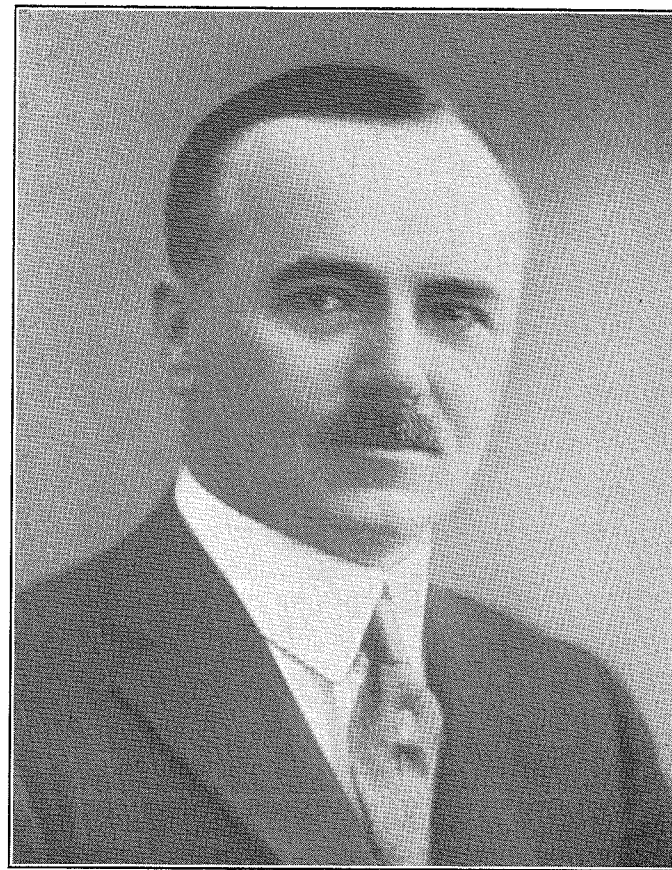
Wallace, Frank C.

FRANK C. WALLACE, Publisher, President and Secretary of the Chester Times, Delaware county's only daily newspaper. Resides in Ridley Park. Mr. Wallace was born on January 26th, 1867, the son of John A. Wallace and Emmeline Coyle Wallace. Prior to taking up his journalistic work, in Chester, Mr. Wallace served as Superintendent of Documents in the Government Printing Office, Washington, and was Assistant Superintendent of Manufacture, Government Printing Office, Washington. His clubs are the Chester, Rotary and Delaware County Sportsmen's Association. He is married, his wife being Anna Erskine Wallace. Mr. Wallace is a director of the Cambridge Trust Company, Chester, and of the Delaware County Motor Club. A member of the Delaware County Historical Society and Pennsylvania Society of New York. He attends the Presbyterian church, and in politics is a Republican.



Long, Charles Ramsay

CHARLES R. LONG, is one of the very few Delaware Countains who can claim membership in the Fourth Estate. As editor and publisher of the Chester Times this distinction is his by right. Being of Scotch-Irish extraction he has naturally succeeded in his chosen profession. Mr. Long was born in Pike County, Ill., on November 4th, 1872, but for more than three decades has had the proud distinction of claiming Delaware county as his residence. He is an indefatigable worker and makes a hobby of his profession. A director in the Chester National Bank, Chester Club, Penn Club and the Chester Hospital. He numbers among his clubs the Union League of Philadelphia, Springhaven Country Club, Penn Club and the Chester Rotary Club. He resides at the Chester Club. He is a member of the Masonic fraternity, Chester Lodge, No. 236. and of the Colonial Society of Pennsylvania, Pennsylvania Society of New York, and the Swedish Colonial of Philadelphia. He is a member of the Congregational church and in politics is a Republican. His one main sport is golf. He golfs in every season of the year, even though it does mean following the sun about a bit.



MacDade, Albert Dutton

ALBERT DUTTON MACDADE, Attorney-at-Law and State Senator from Delaware County, resides at Park Place in the city of Chester. One of the most successful in the profession he so admirably represents, Senator MacDade has long since held a high place in Delaware county where he was born on September 23, 1871. He is a member of the Union League, Philadelphia; the Harrisburg Club, Harrisburg; Lawyers' Club, Philadelphia; Chester Club; Penn Club; Springhaven Club; Craftsman's Club; Brookline Square Club; and the Keystone Masonic Club. He is a member of Chester Lodge of Masons and the Tall Cedars of Lebanon. U. of P. conferred upon him the degree of Bachelor of Laws. Senator MacDade is, of course, a Republican in politics and at one time served as District Attorney in Delaware county. He is a communicant of the Episcopal Church. He is married and has a daughter and son.



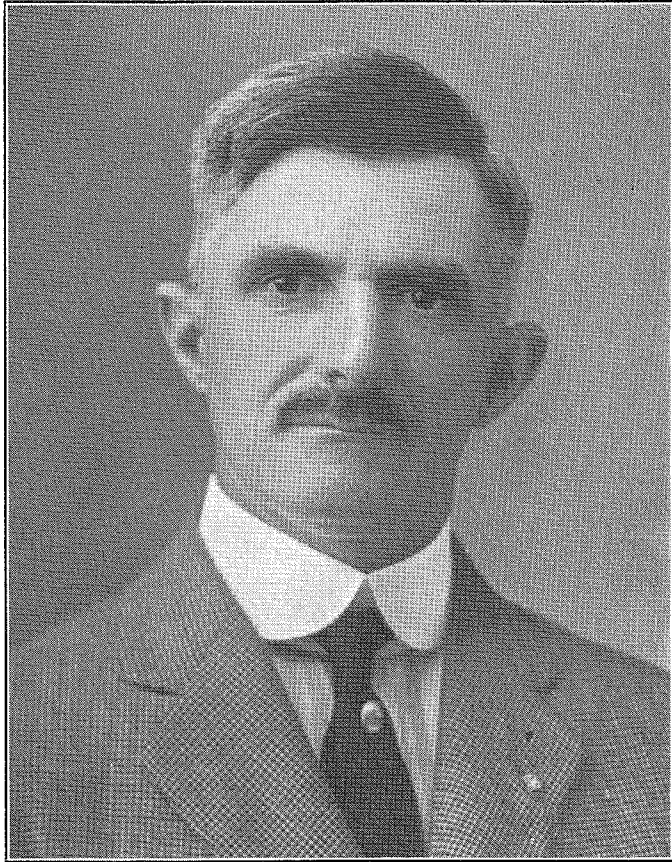
Drewes, Chas. H.

CHARLES H. DREWES, former Coroner of Delaware County, resides at 920 Main street, Darby, Pennsylvania. Mr. Drewes is an Undertaker. He was born on September 25, 1881, the son of George S. and Harriet E. Heaps Drewes, both of whom were born in Delaware county. He is a 32nd Degree Mason, a member of the Philadelphia Commandery, Number 2, University Chapter, Bloomsburg Consistory, and is a member of more than a score of fraternal societies. His clubs are the Brookline Square, Craftsman's, White Apron, Interlink Golf Club of Delaware County, and the Three Link Club. He is a member of the Salvation Army Advisory Board and President of the Darby Fire Company. A Methodist-Episcopal in religion and it goes without saying a Republican in politics. He is married. His hobbies are fishing and gunning.



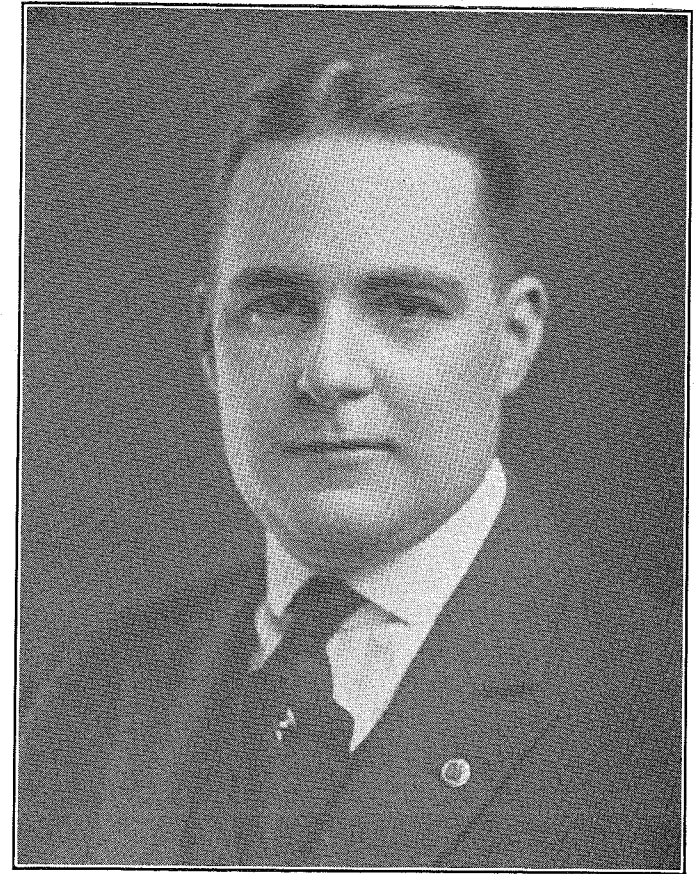
Shoemaker, Richardson, Jr.

FEW men, his years, have achieved the high place bestowed upon Richardson Shoemaker, Jr. Although on the shady side of the 30th milestone, he has for four years past served as clerk of Courts in Delaware County. A resident of Lansdowne where he was born on January 10, 1897, the son of Richardson Shoemaker, Sr. and Jean Shedden Shoemaker. Mr. Shoemaker served in the Army in Mexico in 1916, and during the World War, he served with the 109th Infantry. His clubs are the Springhaven Country, Brookline Square, and the various Republican Clubs throughout the county, as well as the American Legion. He is a member of Lansdowne Lodge of Masons and attends the Baptist church. He is married, his wife being Edith Moroue Fries Shoemaker. His hobby is horsemanship. In politics he is Republican and his principal sports are golfing and swimming.



Harvey, Evans

FARMER, florist and now Recorder of Deeds. Evans Harvey of Brandywine Summit is rendering yeomen service in all three of these callings. Mr. Harvey was born in Chester county, January 18th, 1871, the son of Alban Harvey and Mary Marshall Harvey. He is married, his wife being Elizabeth Auld Harvey. They have one daughter. A member of the Masonic fraternities, 32nd Degree, Lu Lu Shrine, Chester Shrine Club and the Tall Cedars of Lebanon. He is a director of the Charter National Bank of Media. Mr. Harvey is Republican in politics. In religion, a Quaker. His principal sport is football, having been a member of the Varsity team at Swarthmore in 1888. The growing of roses is the one big hobby in Mr. Harvey's life.



Weeks, J. Borton

J. BORTON WEEKS, Attorney-at-Law, and member of the firm Hannum, Chadwick, Hannum and Weeks, Chester, Pa. Mr. Weeks resides at Brookline, Haverford Township. His clubs are the Chester, Springhaven, Brinton Lake, Penn Athletic, Keystone Automobile, Pen and Pencil, Brookline Square, Craftsman's, Ben Franklin and Kiwanis. His fraternities are the Delta Chi (U. of P.), Geo. W. Bart-ram Lodge, F. & A. M., Media Royal Arch Chapter 24, and a member of the American Legion. His societies are the Delaware County Historical, American Bar Association, Penna. Bar Association, Delaware County Bar Association. He was born February 3, 1891, his father being Joseph H. Weeks, and his mother Bessie Borton Weeks. He is President of the Keystone Automobile Club, Vice-President of the National Motorists Association, and Vice-President of the Motorists' Association of Penna. In politics a Republican. He served during the war as a member of the Field Artillery. He is a Presbyterian. His principal sport is tennis. Mr. Weeks is a bachelor.



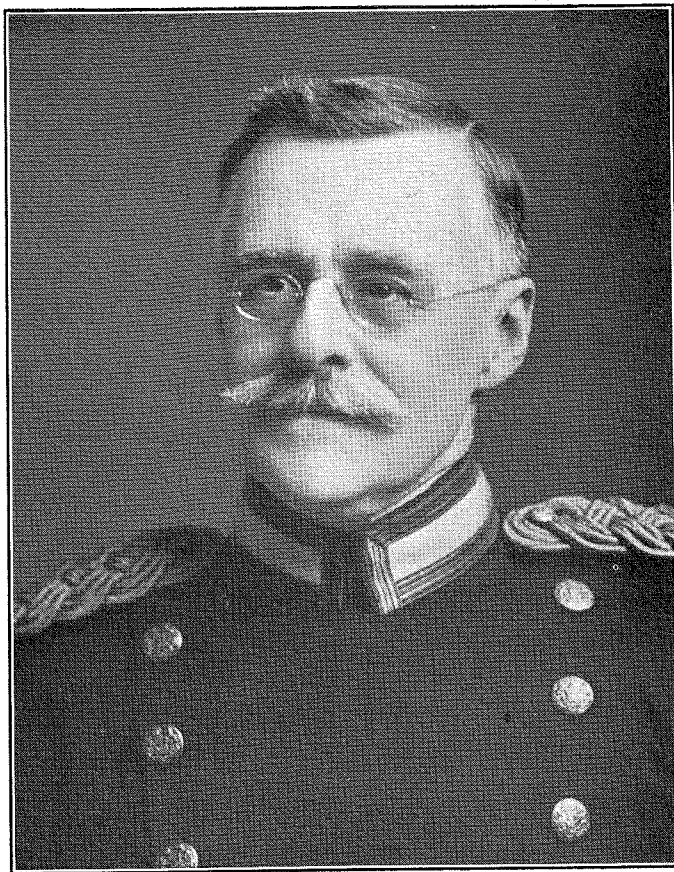
Medary, Robert Steel

ROBERT STEEL MEDARY. Few men throughout Delaware county are better known than the Postmaster of Upper Darby, Robert Steel Medary, who resides in Stonehurst, at 136 Copley Road. Mr. Medary has ever been an indefatigable worker in community affairs and is one of the best known fraternalists in this vicinity. He is a member of the Masonic organizations, the Brookline Square Club, White Apron Club and the Craftsman's Club. Born November 2nd, 1875, the son of Benjamin and Emma Kershaw Medary. His wife is Helen Tomlin Medary. Mr. Medary is a Republican in politics. His principal hobby, sport, etc., can be summed up in one word, fishing.



MacCarter, Wm. J., Jr.

WM. J. MacCARTER, JR., of Ridley Park, has placed himself among the foremost attorneys in this vicinity. As First Assistant District Attorney, Mr. MacCarter has made an enviable name for himself in this district. He was born December 17, 1890, and was educated in the public schools. He graduated from the West Chester State Normal and the University of Pennsylvania, and was admitted to practice law in 1915, becoming associated with Wm. I. Schaffer. He has been a member of the District Attorney's staff since January, 1920, and he is a member of the Board of Directors of the Comerford Construction Company. During the World War, he enlisted and served as a sergeant. He is a Presbyterian and in politics Republican. His fraternities are the Delta Chi, Delta Sigma Rho. A member of the Masonic fraternity, Lu Lu Temple and Tall Cedars. Among his clubs are the Aronomink Golf, Chester, Craftsman's, Ben Franklin, and Saturday Night Club. Mr. MacCarter is married, his wife being the former Mary Josephine Comerford, the well known concert singer.



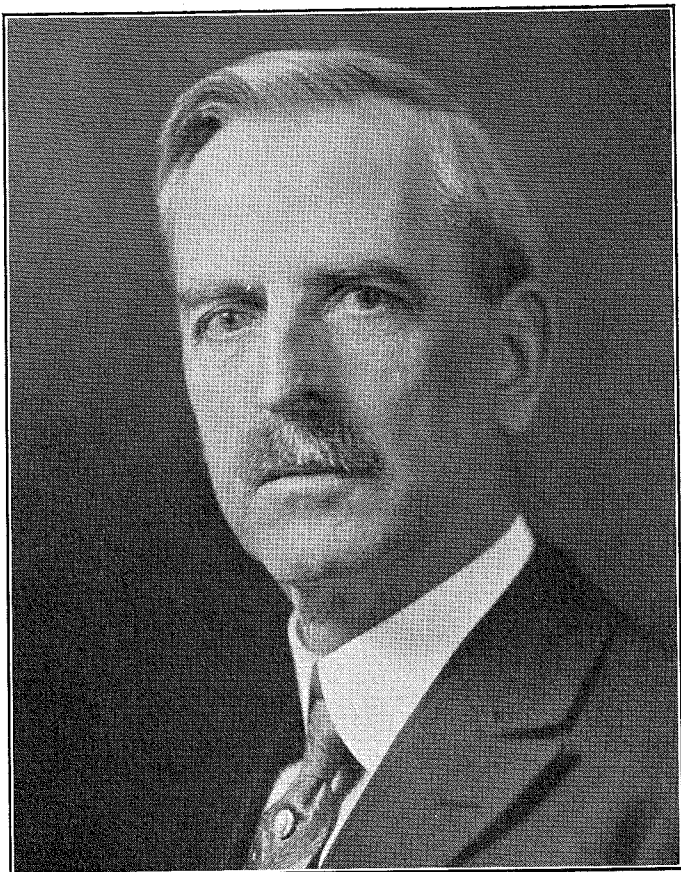
Hyatt, General C. E.

BRIGADIER GENERAL CHARLES ELIOT HYATT has done much for his native county. As President of the Pennsylvania Military College, he has builded well. He stands at the very head of his profession and has the distinction of directing an institute that ranks among the highest colleges in the country. Born November 27, 1851, General Hyatt has devoted his life to teaching. He was Brevetted Brigadier General, N. G. P., June, 1923. Pennsylvania Military College conferred the degree C. E. L. L. D. upon General Hyatt several years ago. He is a member of the Presbyterian faith and his hobby is his work.



Faith, Douglas R.

INCLUDED among the most successful of the younger leaders of finance in Chester, is Douglas R. Faith. He is Secretary and Treasurer of the Cambridge Trust Company as well as a member of the Board of Directors. He was born on March 9th, 1886, and has devoted his entire business life to the financial interests he now serves in an executive capacity. Mr. Faith is married, his wife was Lillian de Hamm, and has two daughters, Lillian and Virginia. His clubs are the Chester, the Keystone Masonic and the Kiwanis. He is a 32nd Degree Mason and a member of the Shrine. In politics he is a Republican and belongs to the Presbyterian faith.



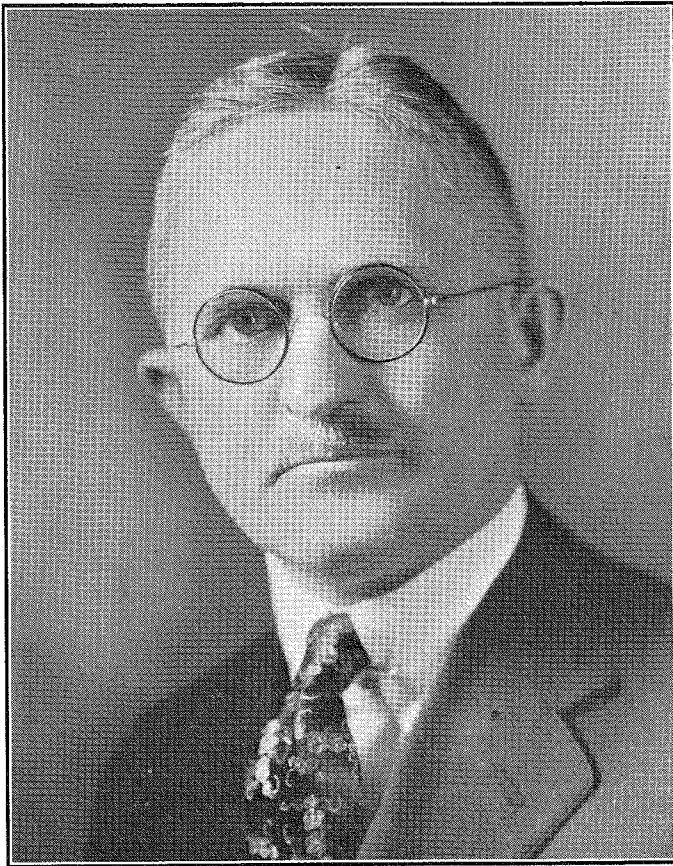
White, Eugene F.

EUGENE F. WHITE, Commissioner of Finance, City of Chester. Mr. White resides at 1401 W. Third street, Chester, Pa. He is a funeral director. His clubs are Chester and the Alpha Boat Club. Mr. White is a member of the Roman Catholic church. His fraternities are the Knights of Columbus, Elks, Eagles and Moose. He was born October 21st, 1865, is married and has seven children. In politics, a rock-ribbed Republican. His principal sport is that of gunning and fishing.



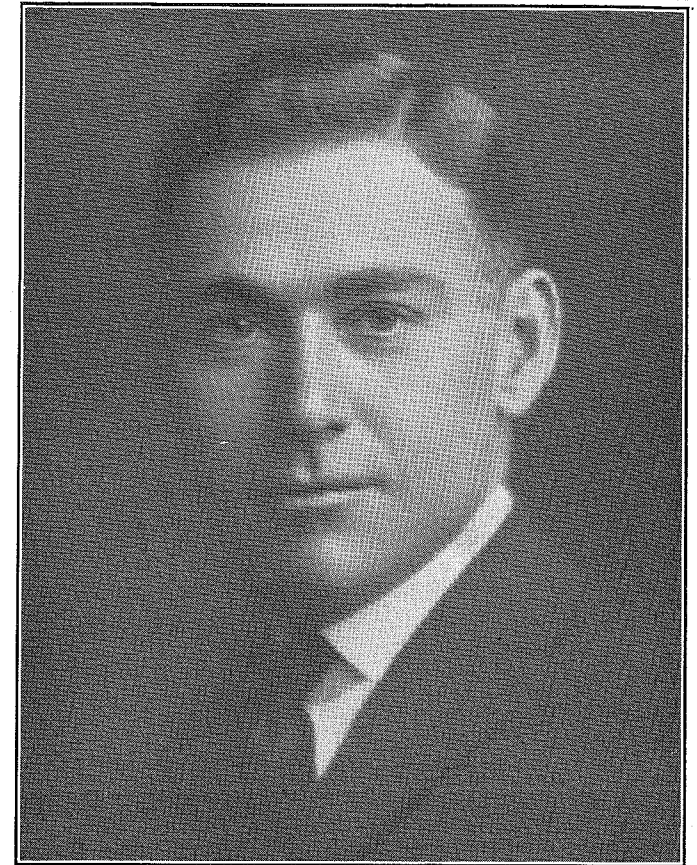
Weeks, Robert H.

ROBERT H. WEEKS, Secretary-treasurer of the Weeks Photo Engraving Co., Inc., and Treasurer of the Penn Building Block Co., Inc., has lived in Delaware County almost continuously since his birth, October 30th, 1894. During the World War he served as Captain of the General Staff, 28th Division, serving the colors for eighteen months. He serves on the board of the above firms in which he holds executive place as well as on the directorate of the Manufacturing Photo Engravers' Association of Philadelphia. His clubs are the Poor Richard, Keystone Automobile, Brookline Square. He is a member of the American Legion and of the Masonic fraternity. Mr. Weeks is a member of the Presbyterian faith. A Republican in politics. He is married. Tennis is his principal sport during the outdoor season, but he places Bridge second to no other sport during the off season. His one big hobby is police dogs, of which the famous "Colonel von Hoode" is his prize winning favorite.



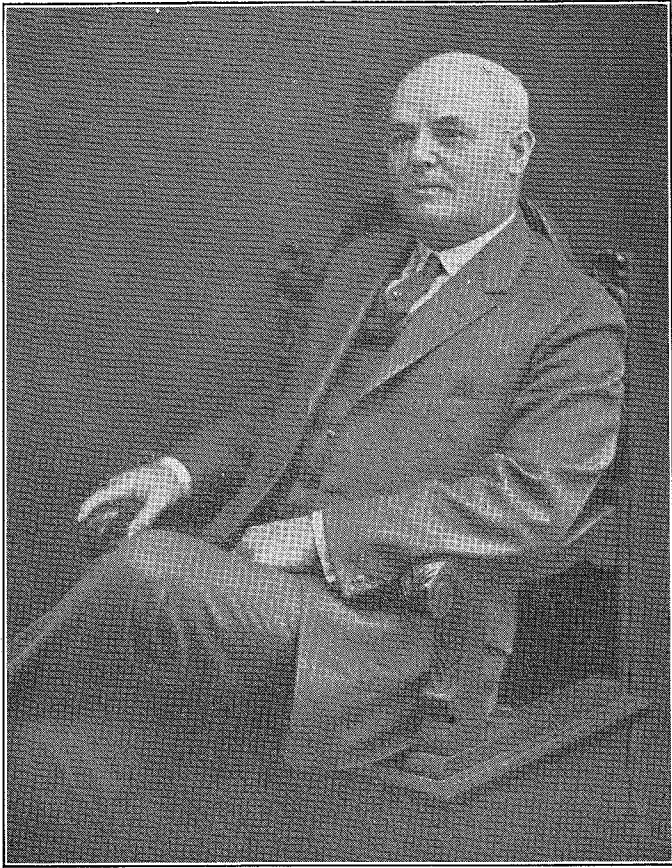
Taylor, William

AS District Attorney of Delaware County, William Taylor has distinguished himself since taking office, six years ago. A tireless worker, whose friends are legion. A leading member of the Bar in Pennsylvania. He is a 32nd Degree Mason, member of Lu Lu Temple, Shrine Club, Tall Cedars of Lebanon and the Brookline Square Club. He is a member of the Delaware County Historical Society, Pennsylvania Historical Society, and the Delaware County and Pennsylvania Bar Association. Was born October 17, 1875, at Edgemont, the son of Caleb Marshall Taylor and Susan Jones Taylor. He is a Quaker. His family consists of his wife, Ellen Haines Taylor, and two children. In politics a Republican. His joint hobby is farming and motoring. His principal sport is baseball.



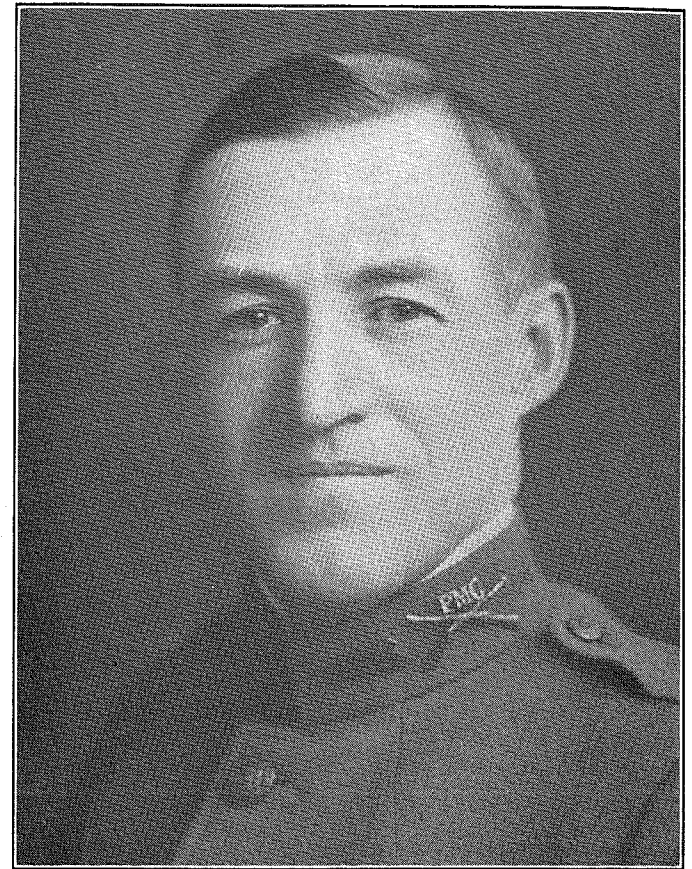
Galey, Wm. T., Jr.

WM. T. GALEY, JR., Secretary and General Manager of the Aberfoyle Manufacturing Co., Chester, was born November 3, 1880, in Philadelphia. Mr. Galey is a member of the Board of Directors of Galey and Lord, Inc., New York City, and the Aberfoyle Manufacturing Co. After finishing as a student of the Wharton School, U. of P., Class 1903, he attended the Philadelphia Textile School one year, and entered the Aberfoyle Plant in 1904. He was elected to his present office in 1910. He is a member of the Union League, Philadelphia, Philadelphia Country Club, Overbrook Golf Club, Seaview Golf Club, also a member of St. Andrew's Society, Philadelphia, the Delta Upsilon, Pa., Chapter. His wife, Mary Lord Galey, and his four children, Janet Lord, Wm. T. 3rd, Mary L., and Charles Lord Galey, comprise his family. He is of the Roman Catholic faith. They reside at Indian Creek Roads, Overbrook, Pa. He is a Republican and an ardent golfer.



Gallagher, James F.

ONE of the pioneers in the automobile trade in this vicinity is James F. Gallagher, who resides at Ridley Park. His business headquarters are located in Chester, with a branch in Lansdowne. He is a member of the Rotary Club at Chester, Springhaven Country, Chester Club, and is a member of the Knights of Columbus and the Elks. His societies are the Pennsylvania Automobile Association, the N. A. D. A. Automobile Club, the Pennsylvania Manufacturers Association, Pennsylvania Automotive Association, and the Chester Dealers Association of which he is President. Was born in Lansdowne in 1871. He is married, his wife being Clara M. Sharkey, and is the father of eight children, Claire, James, Jr., Mary, Leo, Vincent, Rita, Gertrude and Edward. He is a Director of the Delaware County National Bank. He attends the Roman Catholic Church and is a devotee of the ancient and honorable game of golf.



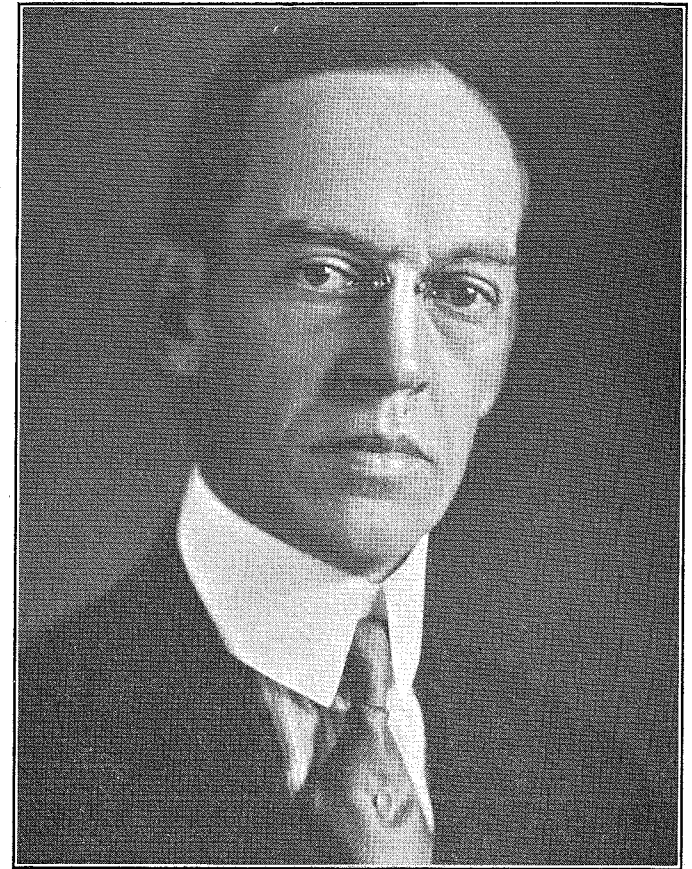
Hyatt, Col. Frank Kelso

COL. FRANK KELSO HYATT, in a large measure, is responsible for the rapid development in recent years of the Pennsylvania Military College, where he serves as an executive. He was born on November 19th, 1886, in the city of Chester. His clubs are the Chester, Springhaven Country and the Pickering Hunt. He is a communicant of the Presbyterian faith. Col. Hyatt holds a B. S. in Engineering. Due to his indefatigable efforts, Pennsylvania Military College today ranks foremost in polo among the leading colleges throughout the United States. He is a horseman of the highest rank. In politics, a Republican.



Makiver, Harry J.

HARRY J. MAKIVER, Attorney-at-Law, resides in Media, Pa., and is one of the leading barristers in Delaware county. Mr. Makiver was born February 3, 1871, the son of John D. Makiver and Sue B. Clark. He is a member of the Masonic fraternity as well as of Lu Lu Temple. His clubs are the Union League, Philadelphia, Media Club and the Media Republican Club. He is a director of the Media Title and Trust Company and has received degrees from both Lafayette and the University of Michigan. During the late war he served as Attorney for the Draft Board. He is married and has one son, John S. P. Makiver. He is a trustee in the Presbyterian Church. In politics a Republican and in sports derives his greatest thrill from football.



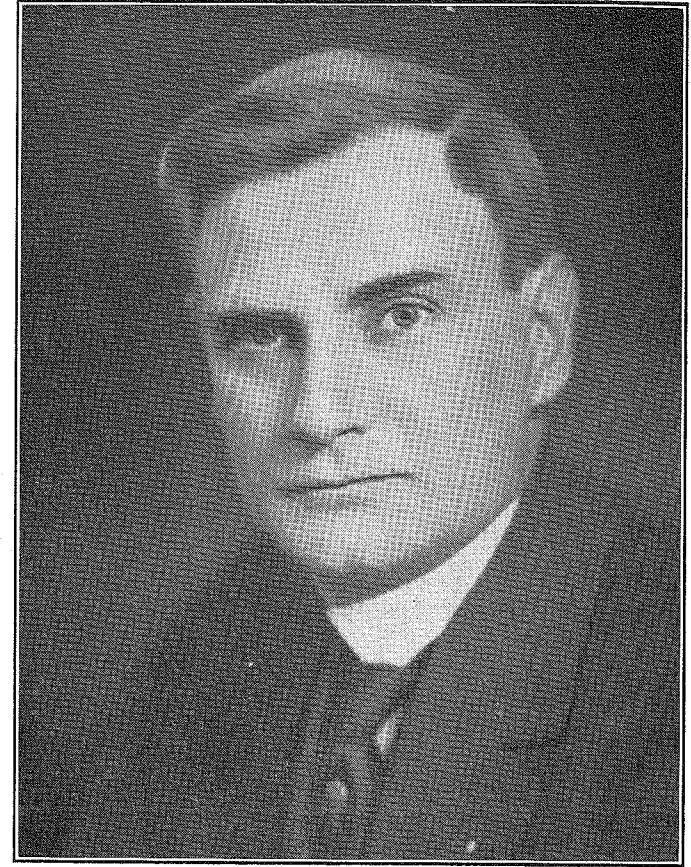
Phillips, W. Vernon

W. VERNON PHILLIPS, resides in Yeadon, at Lansdowne and Lincoln avenues. Prominent in iron and steel industry with offices in Philadelphia. He numbers among his clubs the Union League, Philadelphia; Automobile Club of Philadelphia and the Country Club of Lansdowne of which he is President. He is also President of the Associated Charities for Eastern Delaware county, as well as a member of the Masonic fraternity. Mr. Phillips was born on November 18, 1875, the son of Fred R. Phillips and Emily Mary Jenkins. He is married, his wife being Florence L. Starr. They have a son, Junior, and a daughter, Mary D. A member of the directorate of the Lansdowne Trust Company, Drexel Hill Title and Trust Company and the Delaware County B. and L. During the war a member of the Council of National Defense, and Chief in the War Industry Board. The Italian Government honored him with the decoration Chevalier of the Order of the Crown of Italy. Aside from his many and varied business connections he serves as Chief Burgess of the Borough of Yeadon. In politics a Republican and a communicant of the Episcopal faith. His one sport is golf.



White, Waller Rhoads

WALTER RHOADS WHITE, Attorney-at-Law, resides in Lansdowne, at 132 Hilldale Road. Aside from his legal practice, he is trust officer of the Lansdowne Trust Co., as well as secretary of the Lansdowne B. and L. Association, and treasurer of the Darby Home Protection Society, Inc. A member of the University Club, Philadelphia and the Rolling Green Golf Club, he is also a member of the Kappa Alpha Society. He holds the degree A. B., 1908, and L. L. B., 1911, University of Pennsylvania. Mr. White was born in Philadelphia, January 7th, 1887, the son of George Foster White and Mary Jeanes Walter White. On June 7th, 1916, he married Eleanor May Kellogg, of Ridley Park. They have two children, Nancy May White and Joyce Harper White. A member of the directorate of the Lansdowne Trust Co. and the Drexel Hill Title and Trust Co. He is a progressive republican in politics and a member of the Society of Friends. He derives his principal sport from hand-ball and golf. His hobbies are Ornithology, Genealogy and History of Law.



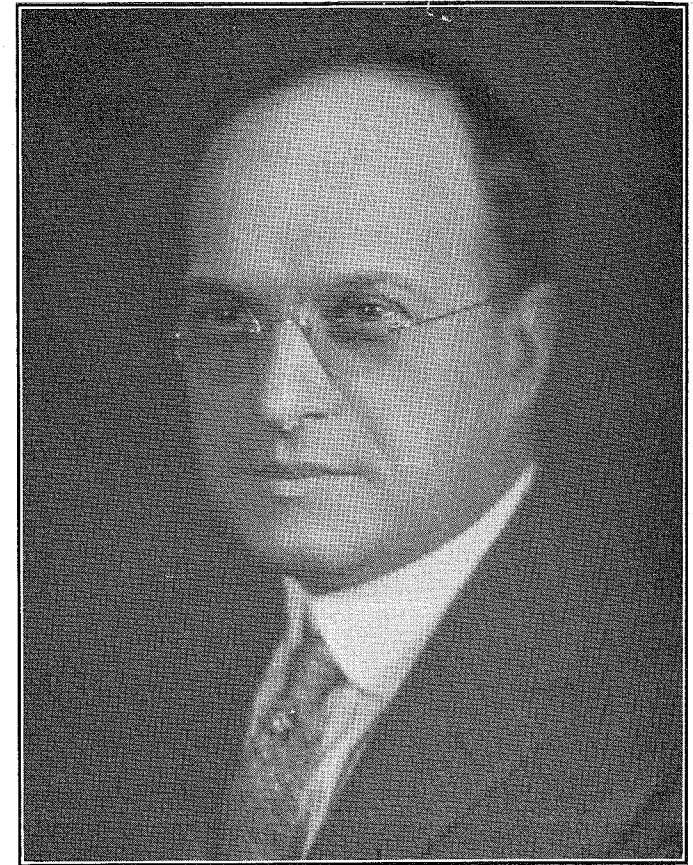
Trainer, T. Woodward

T. WOODWARD TRAINER, broker, resides at Twentieth and Chestnut streets, Chester. An indefatigable worker in bringing large industries to Chester and vicinity, through his interests in the Board of Trade and Chamber of Commerce, of which he is an executive and director. Born in Trainer, Delaware county, March 7th, 1878, the son of Edward Eyre Trainer and Lavinia Woodward Trainer, he received his early education and business training hereabout. Mr. Trainer is a member of the Masonic fraternity and holds membership in the Chester Club, and the Alpha Boat Club. A member of the Military Order of Foreign Wars and a veteran of the Spanish-American War. Mr. Trainer was commissioned an officer by President McKinley and commanded a company for a year at Santiago. On December 11, 1901, he married Mary Gray Wetherill. Their children being Robert Wetherill Trainer, deceased, Lena Woodward Trainer, deceased, T. Woodward, Jr., 14 years, and Mary Louise, 10 years. Mr. Trainer is an Episcopalian and in politics a Republican, for two terms in succession a successful Independent Republican candidate for Chester City Council serving as a member of that body from January 1st, 1918, until January 1st, 1922. His principal hobbies and sport being gunning, fishing and yachting.



Hinkson, J. H. Ward

J H. WARD HINKSON, Attorney-at-Law, was born on October 17th, 1895, in Ridley Park, where he still resides. Although one of the youngest members of the bar in this vicinity he is among the most eminent. Mr. Hinkson served in the U. S. army during the World War, enlisting May 10th, 1917, and returning to be mustered out on August 1st, 1919, after thirteen months over-seas service with the 311th Machine Gun Battalion. He was captain of Infantry. A graduate of the University of Pennsylvania where he received the degree of B. S., L. L. B. He is a Phi Beta Kappa. A member of Almas Temple, Albert Pike Consistory. He is one of the youngest members of the Union League of Philadelphia, as well as holding membership in the Penn Athletic Club of the Quaker City. His Delaware County Clubs are the Chester, Springhaven and Rolling Green. His parents are Joseph H. Hinkson and Bessie Ward Hinkson. He is a member of the firm of Hinkson, Ledward and Hinkson. In politics he is a Republican, and attends the Ridley Park Presbyterian church. An indefatigable sportsman who knows no dull season; in summer he golfs, in winter he is usually to be numbered among the first arrivals at Lake Placid.



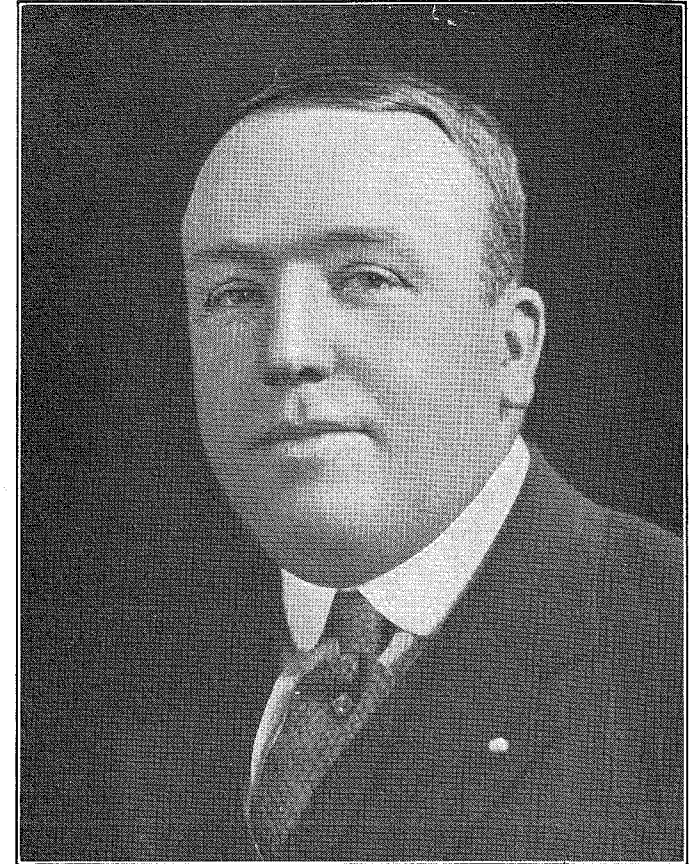
Sterrett, William Granlees

WILLIAM GRANLEES STERRETT, one of the most active and successful among the younger business executives in Delaware county, is Assistant Manager of the Philadelphia Suburban Gas and Electric Company. He is a bachelor and lives with his parents in Upper Darby. Was born in Philadelphia, July 19, 1885. A graduate of Central High School and of the School of Accounting and Finance, U. of P. His clubs are the Country Club of Lansdowne, Kiwanis of Chester and the Chester Club. He is a member of the American Gas Association. A 32nd Degree Mason, as well as a member of Lu Lu Temple, Tall Cedars of Lebanon and White Apron Club. He is a Presbyterian and in politics a Republican. His hobbies are golf, hunting and fishing.



Lutz, Alfred John

ALFRID JOHN LUTZ, a resident of Bywood, whose business is General Insurance, with offices in Philadelphia. Mr. Lutz was born May 25, 1893. Is married, his wife being Eleanor Gerety Lutz. They have two children. He is a graduate of LaSalle College and has been in business since having returned from the Officers' Training Camp at Jacksonville, Florida, where he was located during the War. Mr. Lutz was a leading Juvenile in Musical Comedy Productions prior to his marriage. He is a member of the Roman Catholic Church and a Knight of Columbus.



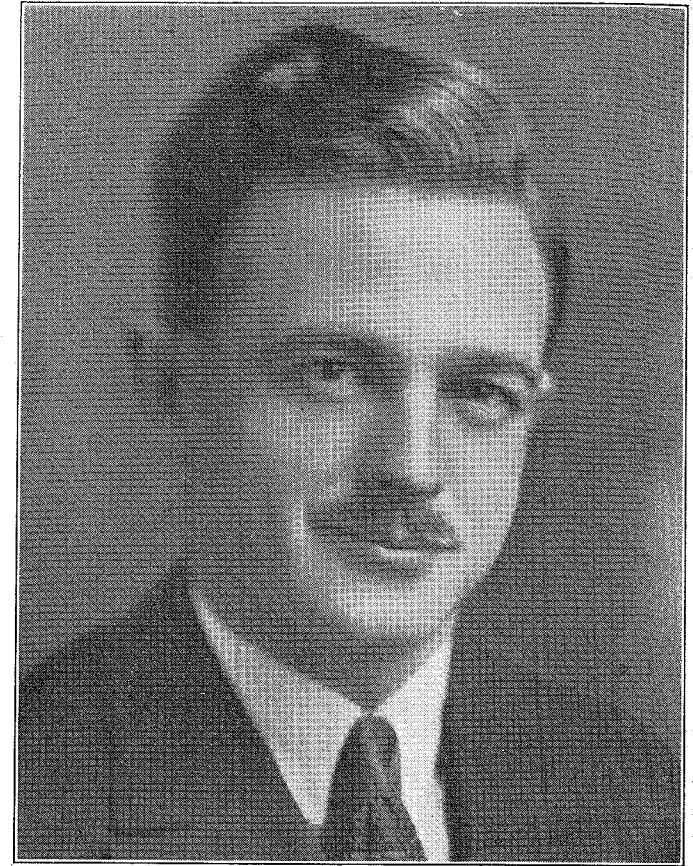
Turner, Ellwood J.

ELLWOOD J. TURNER, Attorney-at-Law, and member of the Legislature from Delaware County. Mr. Turner resides in Idlewhile Lane, Moylan. He was born on August 9, 1886 in Allegheny, Pa. He is married and has four children, his wife being Elizabeth D. Turner, and their children, Elizabeth A., William H., Ellwood J., Jr., and Fred F., 2nd. He is a Director of the Brinton Lake Club, Kiwanis Club and Turner Asbestos and Roofing Company, L.L.B. degree University of Pennsylvania, 1908, and a member of Pennsylvania State and American Bar Associations. His clubs are the Chester, Brinton Lake, Harrisburg, and the Media Swimming and Rowing Club. In religion, a Presbyterian, and in politics, a Republican. His principal hobby and sport is golf and swimming.



Feeley, Thos. F.

THOMAS F. FEELEY, the Democratic member of the Board of County Commissioners, resides at 904 East 20th Street, Chester, an indefatigable worker in the interests of his beloved county. He is now serving his fourth term as County Commissioner. He holds the distinction of serving continually for more than a score of years as a public official, six years of which, were spent in Council, and two years, as a member of the School Board in the City of Chester. Mr. Feeley is the son of M. L. Feeley and Mary Gallagher Feeley. Was born in Chester on July 27, 1867. He is married, his wife having been Sarah A. Friel. They have one child, a daughter, Monica. He is a member of the Knights of Columbus and the Eagles. In politics a Democrat. Secretary of the Packard Automobile Company of Chester. His hobbies are baseball and boxing.



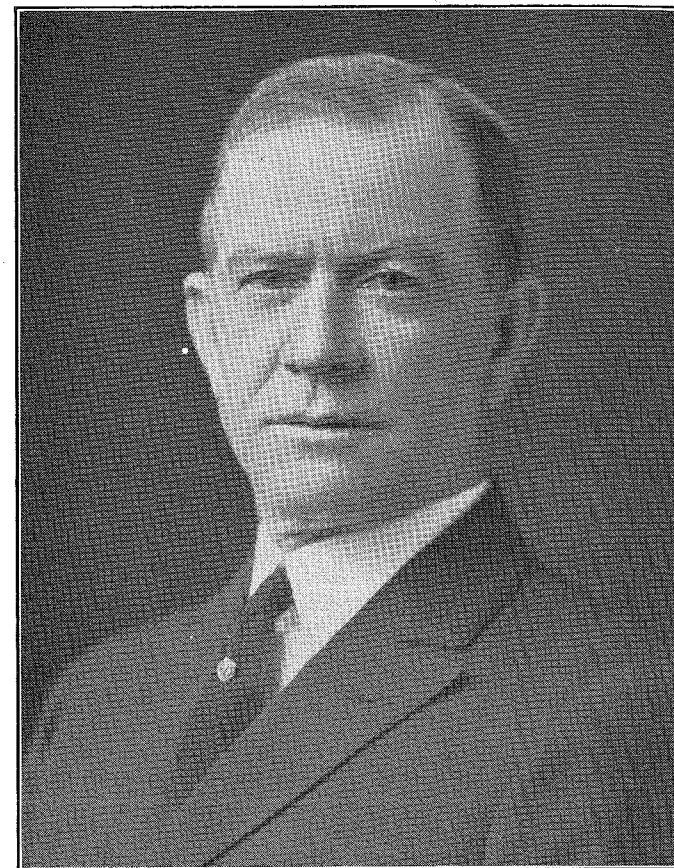
Wolfenden, David H.

DAVID H. WOLFENDEN, of Cardington, is one of the youngest of the manufacturers in this vicinity, being Vice President of the firm Wolfenden & Shore Company. He was born on March 19, 1891, the son of John T. Wolfenden and Pherenna Boyer. He is married, his wife having been Madeline Camcelmo. They have one daughter, Mary Louise. His hobby is the organization of nationally successful soccer-football teams. He is a Republican in politics and attends the Presbyterian church. He derives most of his pleasure in a sporting way from polo.



Hynes, Harry A.

HARRY A. HYNES, electrical contractor, resides in Chester at 714 East Nineteenth street. He was born in Ireland on February 13, 1881, the son of Henry Hynes and Mary McIlmail Hynes. He is a member of Chester Rotary, Electric Club of Philadelphia and Electricists International, as well as the Chester Club and the Brinton Lake Club. He attends the Roman Catholic Church and is a Knight of Columbus. He serves on the Board of Directors of the Merchants Trust Company, Chester and the Industrial Loan Corporation. His especial hobby is electrical engineering. In politics a Democrat. He is married, his wife being Adelaide C. C. Roney Hynes. His principal diversion along sporting lines are confined to golf and baseball.



Birney, Harry Miller, Jr.

HARRY MILLER BIRNEY, JR., President of the Board of County Commissioners, resides at 912 East Nineteenth street, Chester, Pa. Mr. Birney was born on May 18, 1877, in Chester, the son of Harry Birney and Sarah Cross Birney. He is married, his wife being Ella Carolina Laughhead Birney. Their three children are Harry R., Kenneth C. and Joseph M. Birney. A rock-ribbed Republican in politics and a member of the Baptist faith. He is a member of the Elks, Moose and Owls, and his clubs are the Chester, Alpha Boat, Delaware County Sportsmen's, and the Jackson Landing and Fishing Club of Maryland where he indulges frequently in his pet hobbies of gunning and fishing.



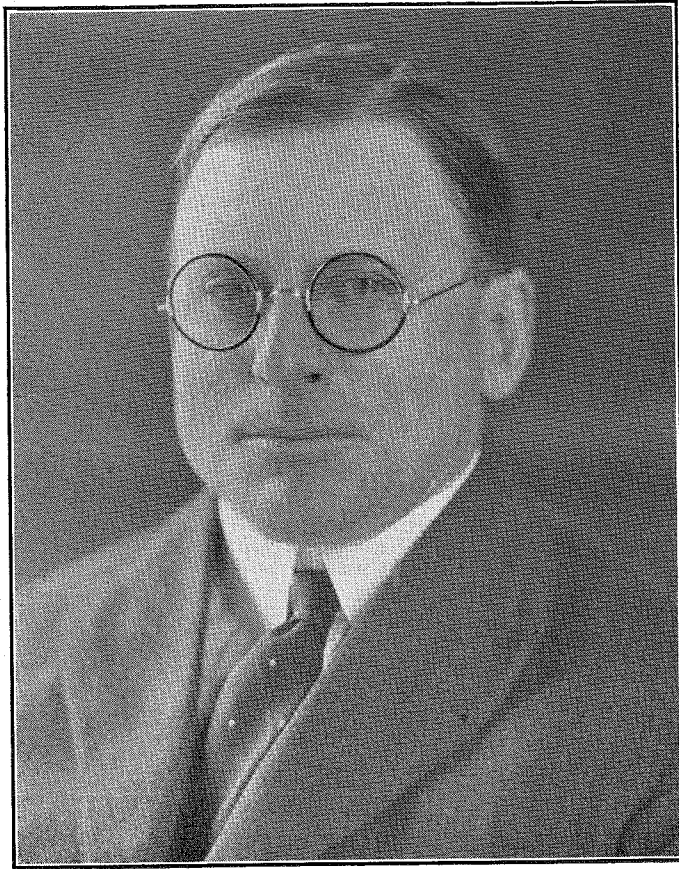
Palmer, William B.

WILLIAM B. PALMER, who resides at Baltimore avenue and Springfield road, Clifton Heights, is among the most prominent realtors in Delaware County. He was born in Clifton on June 17th, 1862, the son of Thomas W. Palmer and Rebecca Force Palmer. He is a member of the Masonic fraternity, and a member of Lu Lu Shrine. He holds membership also in the I. O. A. and the I. O. R. M. A director of the Cherry Grove Realty Corporation, Clifton Heights B. and L. and the Clifton Heights Business Men's Association. In politics a rock-ribbed Republican, having served as Postmaster at Clifton Heights under three presidents from 1900 until 1914. He served also as Chief Deputy Sheriff of the county for four years under Sheriff Granger. He married Clara L. Ludwig. His principal hobby is outdoor life.



Allison, Thos. W.

THOMAS W. ALLISON (deceased), of Ridley Park, was High Sheriff of Delaware county. Born May 29th, 1881, son of William Penn Allison and Anna Sargeant Allison. In business he was senior member of the firm Allison & Company, and President of the Allison Steel Products Company. He was a 32nd Degree Mason and member of the Chester Club, Craftsman's Club and Brookline Square Club, as well as a member of the Pennsylvania Society of New York. His family consisted of his wife and daughter. He was a director of the Cambridge Trust Company, Delaware Valley Forge Company, Chester Club, Lewis P. Crozer Library and Chairman of the American Red Cross, Chester Branch. He was a Republican in politics and an indefatigable worker in the community. His principal sports were football, gunning and fishing.



Hoopes, Frederick C.

FREDERICK C. HOOPES, prominent business man of Upper Darby, resides in Fernwood, 1800 Baltimore avenue. Mr. Hoopes was born September 29th, 1875, the son of Rufus and Elizabeth Lowden Hoopes. He is a member of the Masonic fraternity, 32nd Degree and a Shriner. He is a member of the Craftsman Club and the Lansdowne Business Men's Association as well as a member of the Humane Society. He is a director of the First National Bank of Clifton Heights and aside from his vast business interests, being the head of the lumber and building materials concern bearing his own name, he is vitally interested in the business and community affairs of the county. He is a Republican in politics serving as a member of the Board of Commissioners of Upper Darby Township. Mr. Hoopes is a Quaker. He is married, his wife having been Margaret Ott and they have one son, Charles F. Hoopes. He derives most of his sport from gunning and fishing.



Hickey, Frank James

FRANK JAMES HICKEY, Managing Editor of the Chester Times, Chester, has been in the newspaper business virtually all his life. Born on April 27th, 1889, in Boston, Mass., where his family long have been identified with the newspaper interests of New England. His first newspaper work was in connection with the Associated Press. He has been identified with newspapers in Los Angeles, Lynn, Mass., Hartford, Conn., New York and Philadelphia. He is a member of Concordia Lodge, No. 67, F. & A. M., of Philadelphia. He is married and resides in Chester.



Reybold, Frederick K.

FREDERICK K. REYBOLD resides in Lansdowne and serves as Managing Editor of the Wilmington, Delaware, "Every Evening." Born on July 8th, 1874, in St. Georges, Del., the son of Mr. and Mrs. J. F. Reybold. Mr. Reybold for more than a score of years was connected with the newspapers of Philadelphia. Returning to his native State of Delaware in May, 1915, as a part owner and managing editor of the "Every Evening," of which he is also a director. He is married, his wife having been Marian Lippincott and their four children are John Black Reybold, Frederick K. Jr., Marian L. and Phillip Reybold. He is a horse back rider and a lover of baseball. In politics a Republican and a member of the Presbyterian faith.



Purdy, William C.

A LEADER in his profession and an authority on matters relating to highway construction. William Clausen Purdy, serves as Vice-President of the Pennsylvania Paving Company and Vice-President of the Chester Materials Company. Mr. Purdy resides in Glenolden. A native son of Philadelphia, he received his degree at the University of Pennsylvania, and after graduating went West and engaged in the building of better roads along the Pacific slope. He is an Elk, and a member of the various Masonic organizations. His hobby is his work, but when sports call him he gets out a fisherman's outfit that is the envy of all lovers of rod and reel.

Bickley, Walter S.

WALTER S. BICKLEY, retired, spends his summers on his beautiful estate at Baltimore Pike and Swarthmore avenue, this county and his winters in St. Petersburg, Florida. He at one time served as President and General Manager of the Penn Steel Castings Company, Chester. A member of the Springhaven Country Club, the Chester Club, Rotary Club, Keystone Automobile Club and the following clubs of St. Petersburg, Florida: the Motor Club, the Yacht Club, the Art Club and the Chamber of Commerce. A member of all the Masonic fraternities, including the Shrine, being a 32nd Degree Mason. Mr. Bickley was born on March 13th, 1866, and is married, having three children. He was patentee and owner of the Baldt Anchor Company until 1913. A member of the Board of Directors of the Delaware County Trust Co., Princess Martha Hotel Co., St. Petersburg, Florida, and President of the Crescent Tile Co., of St. Petersburg. In politics he is a Republican. A lover of sports in general, but of gunning and fishing in particular.

Pew, John G.

THE business activities of John G. Pew are many and varied. He is President of the Sun Shipbuilding and Dry Dock Company, Chester, and Vice President of the Sun Oil Co. A member of the Board of Directors of the United Fuel and Gas Company, West Virginia, and the Delaware County National Bank, Chester. Mr. Pew formerly was connected with the Peoples Gas Company, 1896-1916, the Hope Gas Company and the Reserve Gas Company. He is a member of the Engineers' Club of Western Pennsylvania, Mining Engineers' Club, New York, and is a 32nd Degree Mason, Pittsburgh No. 1 Commandery. His club membership comprises the Duquesne Club, Pittsburgh Field, Lawyer's Club of New York, Manufacturers' Club of Philadelphia, Philadelphia Athletic, Merion Cricket and Springhaven Country Club. He is of the Presbyterian faith and in politics is a Republican. Born in Mercer, Pa., he now lives at Rose Valley. Mrs. Eva W. Pew, his wife, four daughters and five sons comprise his family. Golfing is his sport and farming his hobby.

Allen, George Washington

GEORGE WASHINGTON ALLEN is Warden of the County Penal Institution at Media where he resides. For a decade, 1906-1915, he was a member of the Board of Commissioners and to him credit for the modern Court House, built in 1912, should go. He served as Treasurer on the State of Pennsylvania Commissioners Convention. Few men have the splendid gift of leadership which is his by nature. George Washington Allen was born in Wallingford, January 24, 1881, the son of Thomas B. Allen and Patience Beatty Allen. He is married, his wife being Frances C. Baker Allen. Their children are Jane, Sarah Ann, Frances B. and George Washington Allen, Jr. He is a Republican in politics and a member of the Methodist church. His principal hobby as well as his one sport is gunning. He is a member of the Media Republican Club, the Elks, and the Jackson Landing and Fishing Club of Maryland.

Hart, Albert V.

ALBERT V. HART, broker, resides in Highland Park at 119 Ardsley Road. An indefatigable worker in civic affairs and a pioneer and leader in his business. Born in Detroit, Michigan, July 18th, 1883, the son of Michael and Mary McGraw Hart. His wife, Matilda Razebruk Hart, and a daughter, M. Helen Hart, comprise his family. He is a member of the City Club, Philadelphia, and Lion's Club, of West Philadelphia. In politics, a Republican. A member of the Roman Catholic church. A member Board of Trade, Philadelphia, Pa., Treasurer Highland Park B. & L. Association, Treasurer Township B. & L. Association. Director Iron and Steel B. & L. Association and Hart Loan Society. His principal hobby is community affairs and his main sports being football, baseball and outdoor sports in general.

Jeffords, Walter M.

WALTER M. JEFFORDS, of Glen Riddle, Pa., is one of the best known men of the younger business set in Delaware County. Mr. Jeffords is a manufacturer and serves on the Board of Directors of the J. & J. Dobson Company. He was born August 18, 1883, is married and has one child. He is a member of the D. K. E. Fraternity, and has a B. A. in the way of degrees. During the World War he served as an Ensign in the U. S. N. R. F. He is a Republican in politics, and is a member of the Episcopal faith. Few Delaware Countians are as well known in the sporting realm as Mr. Jeffords. As a fox hunter he long since earned his spurs. He is a member of the Rose Tree Hunt Club, Racket Club, Philadelphia, the Yale, Rittenhouse, and Philadelphia Country Clubs.

McEvoy, John C.

JOHN C. McEVOY, of Llanerch, Delaware County, is a leader in the Iron and Steel Industry in Eastern Pennsylvania and a member of many clubs, principally the Manufacturers', Philadelphia Manufacturers Country Club, Old Colony Club, etc. He is a Fourth Degree Knight of Columbus and a member of the Friendly Sons of St. Patrick. He was born October 4, 1885, the son of John J. McEvoy and Margaret C. Heywood McEvoy. He is a Director of the W. J. Dougherty Corporation, Cattie Bros., J. E. Mueller Company, and the McEvoy Company. In politics a Republican, and a member of the Roman Catholic Church. He is married, his wife being Edith L. Eammell, and their children are Gerrard, Margaret, John and Edith.

Alexander, William Cloud

WILLIAM CLOUD ALEXANDER, Attorney-at-Law, resides at Media, at Third and Monroe streets. Mr. Alexander was born on November 12th, 1870, the son of Thomas B. Alexander and Margaret Cloud Alexander. He is a member of the American Bar Association, State Bar Association and Delaware County Bar Association. In politics a Republican, serving as a member of Legislature from the Second District of Delaware county since 1919, four sessions in all. Mr. Alexander serves as Solicitor for the Sheriff of Delaware county. He is a member of the Elks, Moose and P. O. S. of A. He is married his wife having been Mae F. Erisman. They were married May 7th, 1892, their two children being Beatrice Zadie Alexander and Jay Cooke Alexander.

McClatchy, Walter A.

ONE of the most prominent among those who have accomplished much in building up the eastern section of Delaware county is Walter A. McClatchy, builder and realtor, of Seventieth and Market streets, Upper Darby. Few men his years have played such an active part in promoting building in this county. Mr. McClatchy was born on February 27th, 1889, the son of George McClatchy and Elizabeth Winter McClatchy. He is married, his wife having been Kathryn R. Artman, and their children Walter J. McClatchy, William McClatchy, Edward McClatchy and Donald McClatchy. He is a director in numerous Building and Loan Associations. He is a communicant of the Roman Catholic church. He numbers among his fraternities the Elks and the Knights of Columbus. He is a Republican in politics. His principal hobby, aside from his interest in boys, is that of fishing. His principal sport is base ball.

Price, General William Gray, Jr.

WILLIAM GRAY PRICE, JR., of Chester, is the Commanding General of the Pennsylvania National Guard. He resides at 900 Kerlin street. Born in Chester, on March 23, 1869, the son of William Gray Price and Jane Campbell Price. A member of the following clubs, the Union League of Philadelphia, Army and Navy, Washington, Westmoreland, of Wilkes-Barre, Alpha Boat Club, Rose Tree Hunt, Springhaven Country and the Chester. He is a member of the Pennsylvania Society Sons of the Revolution, United Spanish War Veterans, Naval and Military Order of the Spanish-American War, American Legion, Companion of the Military Order of the World War and the Pennsylvania Historical Society. A director of the Cambridge Trust Co., Chester, and the Guarantee Trust Co., Philadelphia, as well as of many corporations. The degree Master Military Science was conferred upon him by P. M. C. His government service consists in part of the following: Lt. Col. Third Pennsylvania Volunteer Spanish American War; Brigadier General First Infantry Brigade, Seventh Division Mexican Border service, 1916-17; Brigadier General commanding 53d F. A. Brigade, U. S. A., A. E. F., 28th Division, 1917-19; Major General (O. R. C.) He is married and a member of the Episcopalian faith. Politically a Republican. He has been awarded the following: U. S. Medal, Spanish American War; Pennsylvania Medal, Spanish American War; U. S. Mexican Campaign Medal; Pennsylvania Mexican Campaign Medal; Distinguished Service Medal by U. S. Government for Service, World War; French Croix de Guerre with Corps Citation; Belgian Croix de Guerre by Royal decree; Officier Legion d'Honneur of France; Victory Medal with five campaign bars; and Pennsylvania World War Medal, one citation.